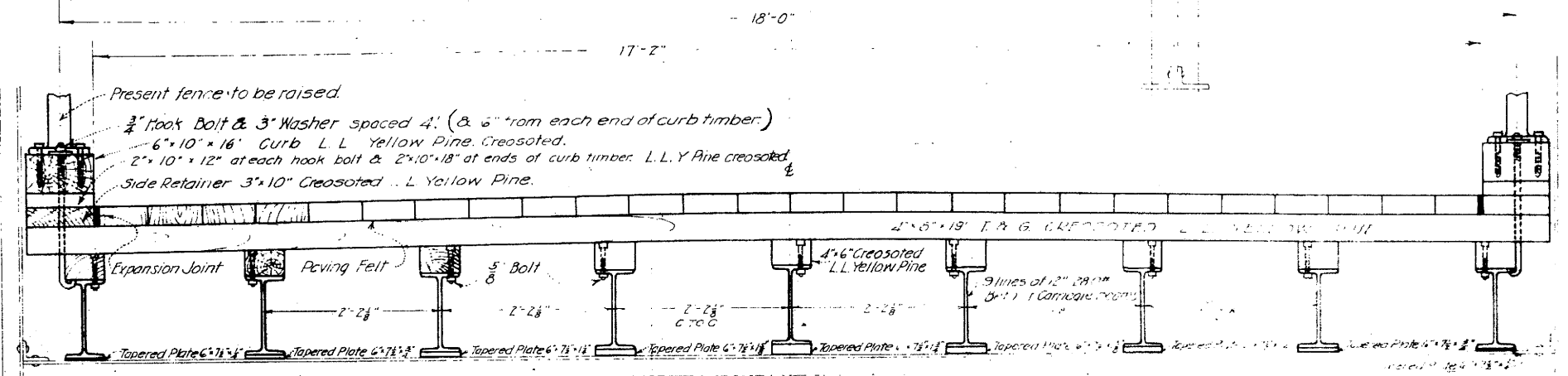
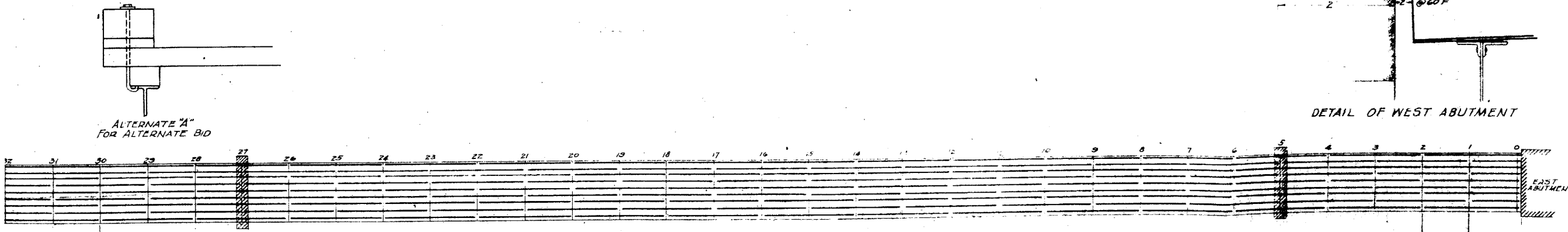
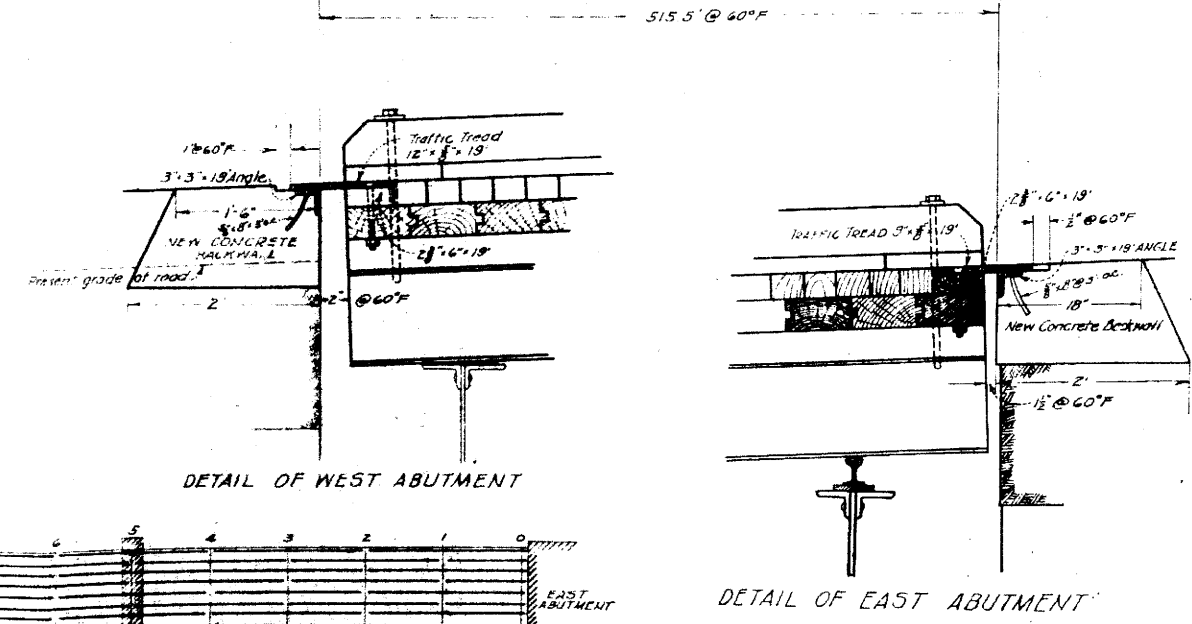


PROFILE AT NORTH CURB BETWEEN PANELS 0 TO 2.



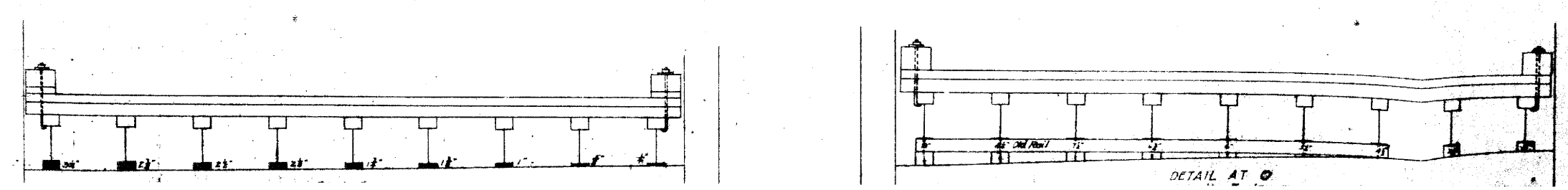
CROSS SECTION

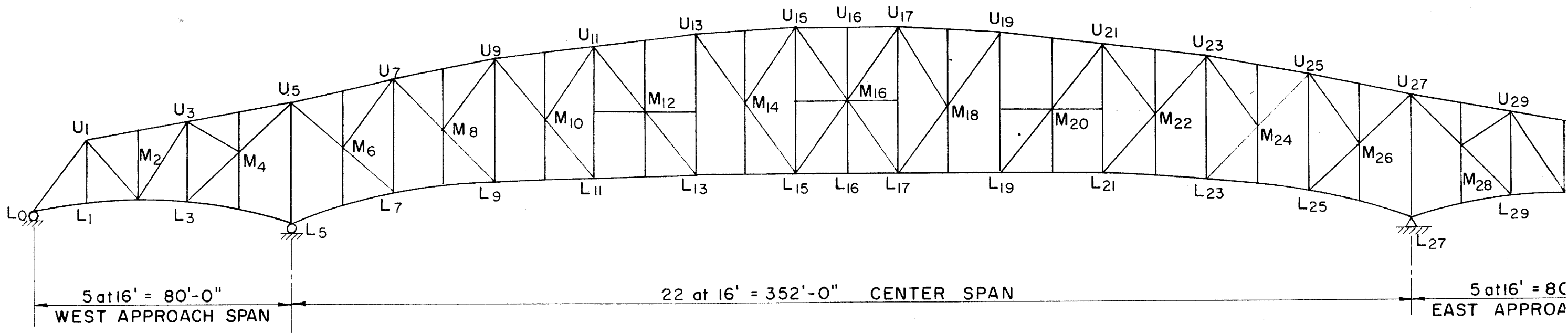
All except #0, 1, 31, & 32.



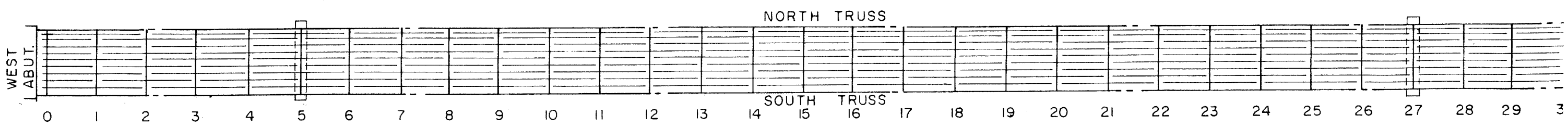
STEEL SCHEDULE

PROPOSED FLOOR
SCHELL BRIDGE
TOWN OF NORTHFIELD, MASS.
SCALE 1"=1'
APRIL 11, 1932.





TRUSS ELEVATION



PLAN - FLOOR BEAMS AND STRINGERS

ick bent.

Connections at U₁₁
2 gusset plates 5/16" thick
1 lateral gusset 32" x 5/16" bent
2 side plates 15" x 3/8"
2 filler plates 10" x 3/8"
2 Ls 3" x 3" x 3/8", Top inside
2 bars 3" x 3/8", bottom.

Connections at U₁₃
2 gusset plates 5/16" thick
1 lateral gusset 32" x 5/16" bent
2 side plates 15" x 3/8"
2 filler plates 10" x 3/8"
2 Ls 6" x 3 1/2" x 3/8" Top, inside.
2 bars 3" x 3/8", bottom.

Connections at U₁₅
2 gusset plates 5/16" thick
1 lateral gusset 30" x 5/16" bent
2 side plates 15" x 3/8"
2 filler plates 10" x 3/8"
2 Ls 6" x 3 1/2" x 3/8" Top, inside
2 bars 3" x 3/8"

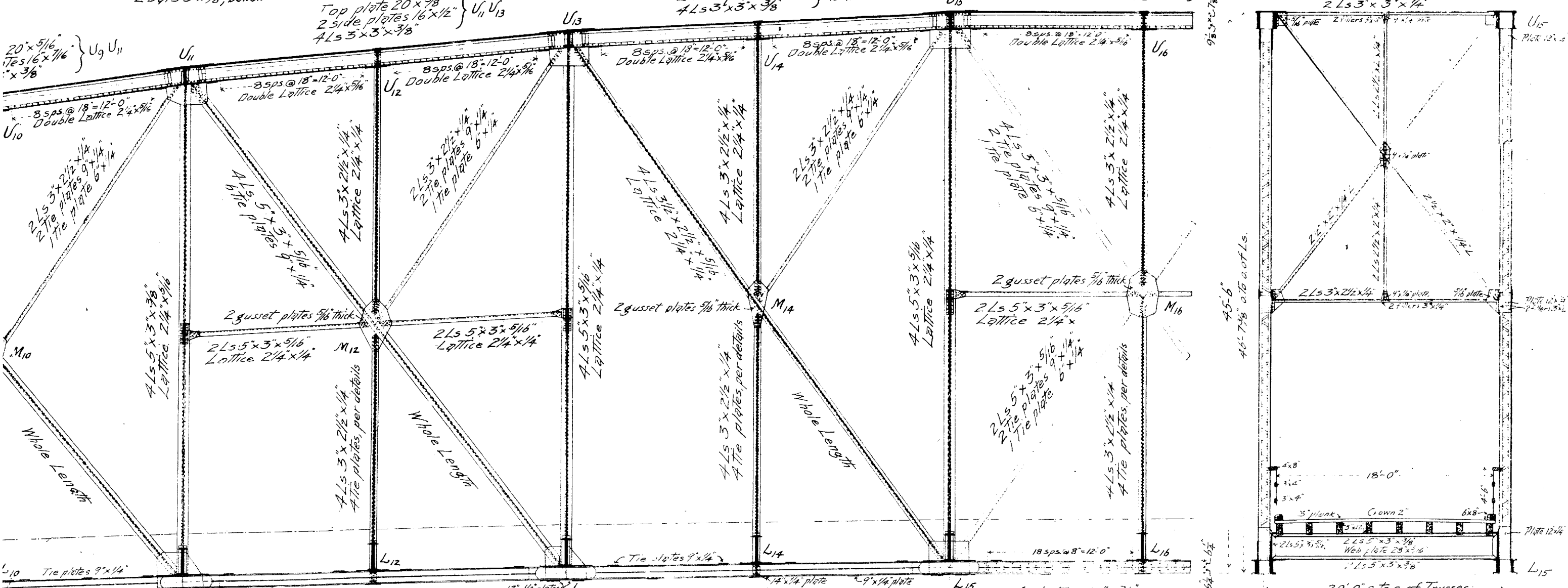
20" x 5/16"
Ties 16" x 7/16"
x 3/8"

Top plate 20" x 3/8"
2 side plates 16" x 1/2"
4 Ls 3" x 3" x 3/8"

Top plate 20" x 7/16"
2 side plates 16" x 1/2"
4 Ls 3" x 3" x 3/8"

Top plate 20" x 7/16"
2 side plates 16" x 1/2"
4 Ls 3" x 3" x 3/8"

VERTICAL SECTION AT U₁₅-L₁₅



45'-6"
46'-7 1/8" o.t.c. of Ls.

64'-3 1/2" o.t.c.

4 x 1/4" plate
9 x 1/4" plates
2" x 3/8"
3/8"

2 plates 12" x 3/8"
2 " 12" x 1/4"
4 Ls 6" x 4" x 3/8"

2 plates 12" x 3/8"
2 " 12" x 5/16"
4 Ls 6" x 4" x 7/16"

4 plates 12" x 3/8"
4 Ls 6" x 4" x 7/16"

Connections at L₁₁
2 gusset plates 5/16" thick, flush with 12" x 1/4" plates, L₁₁-L₁₃
1 lateral gusset 16" x 5/16" bent
2 side plates 12" x 3/8" inside
2 " 11" x 1/2" outside
3 bars 3 1/2" x 7/16" Top and bottom
1 " 3 1/2" x 1/4" under lateral gusset
2 tie plates 12" x 1/4"

Connections at L₁₃
2 gusset plates 5/16" thick, flush with 12" x 5/16" plates L₁₃-L₁₅
1 lateral gusset 16" x 5/16" bent
2 side plates 12" x 3/8" inside
2 " 11" x 1/2" outside
3 bars 3 1/2" x 1/2" Top and bottom
1 " 3 1/2" x 1/4" under lateral gusset
2 tie plates 12" x 1/4"

Connections at L₁₅
2 flush gussets 5/16" thick
1 lateral gusset 16" x 5/16" bent
2 side plates 12" x 3/8" inside
2 " 11" x 1/2" outside
3 bars 3 1/2" x 1/2" Top and bottom
1 " 3 1/2" x 1/4" under lateral gusset
2 tie plates 12" x 1/4"

NOTE.
All rivets, 3/4" diam. before driving
All tie plates 1/4" thick
Unless otherwise marked.

EDWARD S. SHAW,
BRIDGE AND STRUCTURAL
CONSULTING ENGINEER,
12 PEARL STREET
BOSTON, MASS.

22 panels @ 16'-0" = 252'-0" c.t.c. of pier bearings.

SCHELL MEMORIAL BRIDGE,

OVER THE
CONNECTICUT RIVER

SUPERSTRUCTURE.

IN THE TOWN OF
NORTHFIELD, MASS.

VERTICAL ELEVATIONS AND SECTIONS,

SCALE, 1/4" = 1'

EDWARD S. SHAW,
BRIDGE AND STRUCTURAL
CONSULTING ENGINEER,
12 PEARL STREET,
BOSTON, MASS.
1901

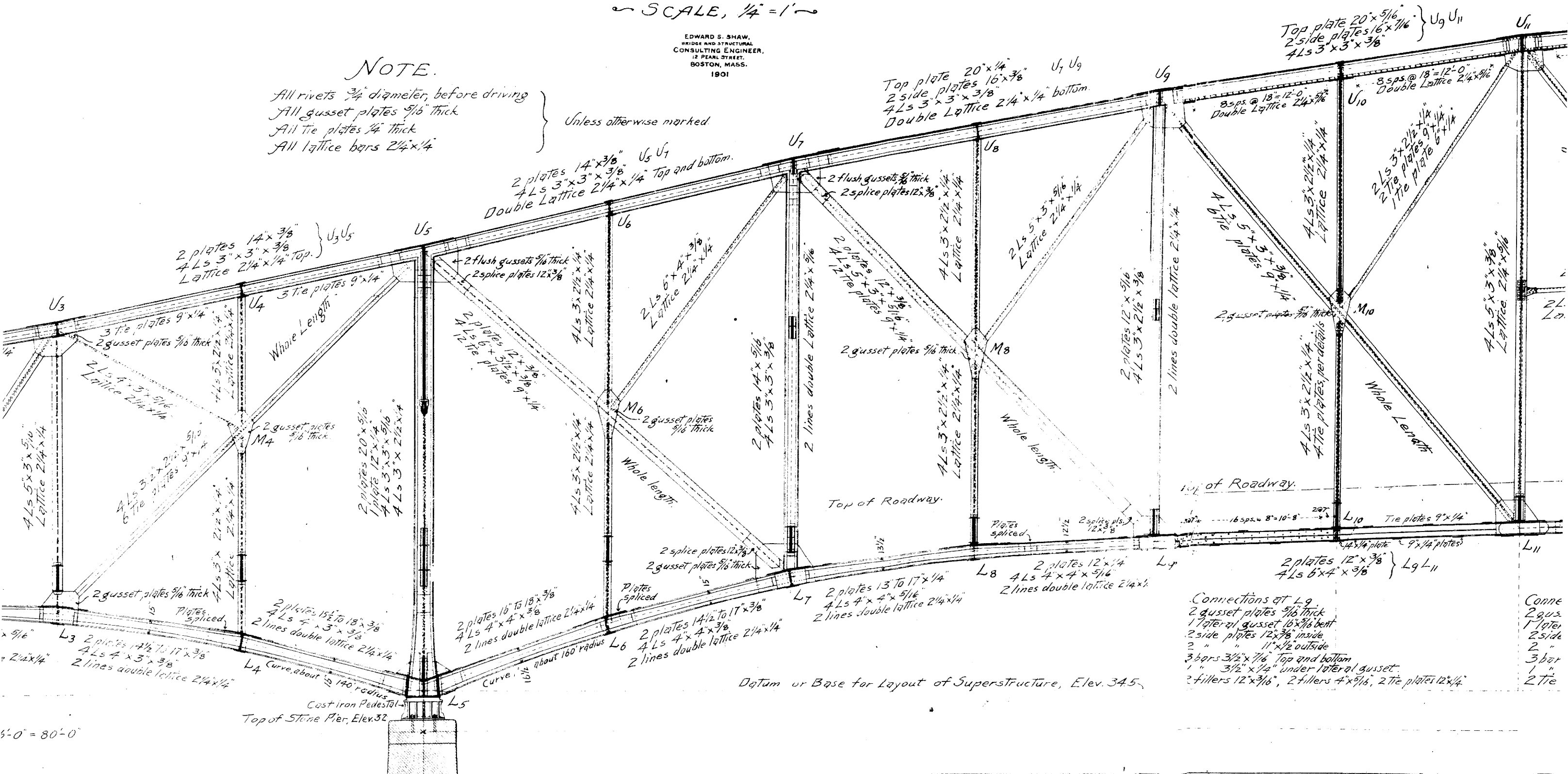
Connections at U₉
2 gusset plates 5/16" thick
1 lateral gusset 3/4" x 3/16", bent.
2 side plates 15" x 3/8"
2 filler plates 10" x 3/8"
2 bars 3" x 3/8", bottom

Connections at U₁₁
2 gusset plates 5/16" thick
1 lateral gusset
2 side plates
2 filler plates
2 Ls 3" x 3" x 3/8"
2 bars 3" x 3/8", bottom

NOTE.

All rivets 3/4" diameter, before driving
All gusset plates 5/16" thick
All tie plates 1/4" thick
All lattice bars 2 1/4" x 1/4"

Unless otherwise marked.



Top plate 20" x 1/4"
2 side plates 16" x 3/8"
4 Ls 3" x 3" x 3/8"
Double Lattice 2 1/4" x 1/4" bottom

Top plate 20" x 5/16"
2 side plates 16" x 7/16"
4 Ls 3" x 3" x 3/8"

2 plates 14" x 3/8"
4 Ls 3" x 3" x 3/8" top.
Lattice 2 1/4" x 1/4"

2 plates 14" x 3/8"
4 Ls 3" x 3" x 3/8" Top and bottom.
Double Lattice 2 1/4" x 1/4"

2 flush gussets 5/16" thick
2 splice plates 12" x 3/8"

2 flush gussets 5/16" thick
2 splice plates 12" x 3/8"
2 plates 14" x 5/16"
4 Ls 3" x 3" x 3/8"

2 plates 12" x 5/16"
4 Ls 3" x 2 1/2" x 3/8"
2 lines double lattice 2 1/4" x 1/4"

2 Ls 3" x 2 1/2" x 1/4"
2 Tie plates 9" x 1/4"
1 Tie plate 6" x 1/4"

4 Ls 5" x 3" x 5/16"
Lattice 2 1/4" x 1/4"

2 plates 20" x 5/16"
1 plate 12" x 1/4"
4 Ls 3" x 3" x 5/16"
4 Ls 3" x 2 1/2" x 1/4"

4 Ls 3" x 2 1/2" x 1/4"
Lattice 2 1/4" x 1/4"

2 gusset plates 5/16" thick
4 Ls 3" x 2 1/2" x 1/4"
Lattice 2 1/4" x 1/4"

2 plates 12" x 5/16"
4 Ls 3" x 2 1/2" x 3/8"

4 Ls 3" x 2 1/2" x 1/4"
4 Tie plates per detail

2 plates 13" to 17" x 3/8"
4 Ls 4" x 4" x 5/16"
2 lines double lattice 2 1/4" x 1/4"

2 plates 15 1/2" to 18" x 3/8"
4 Ls 4" x 3" x 3/8"
2 lines double lattice 2 1/4" x 1/4"

2 plates 16" to 18" x 3/8"
4 Ls 4" x 4" x 5/16"
2 lines double lattice 2 1/4" x 1/4"

2 plates 14 1/2" to 17" x 3/8"
4 Ls 4" x 4" x 3/8"
2 lines double lattice 2 1/4" x 1/4"

2 plates 13" to 17" x 1/4"
4 Ls 4" x 4" x 5/16"
2 lines double lattice 2 1/4" x 1/4"

2 plates 12" x 1/4"
4 Ls 4" x 4" x 5/16"
2 lines double lattice 2 1/4" x 1/4"

Connections at L₉
2 gusset plates 5/16" thick
1 lateral gusset 16" x 3/16" bent
2 side plates 12" x 3/8" inside
2 " " 11" x 1/2" outside
3 bars 3 1/2" x 7/16" top and bottom
1 " 3 1/2" x 1/4" under lateral gusset.
2 fillers 12" x 3/16", 2 fillers 4" x 5/16", 2 Tie plates 12" x 1/4"

Connections at L₁₁
2 gusset plates 5/16" thick
1 lateral gusset
2 side plates
2 " " 11" x 1/2" outside
3 bars 3 1/2" x 7/16" top and bottom
1 " 3 1/2" x 1/4" under lateral gusset.
2 fillers 12" x 3/16", 2 fillers 4" x 5/16", 2 Tie plates 12" x 1/4"

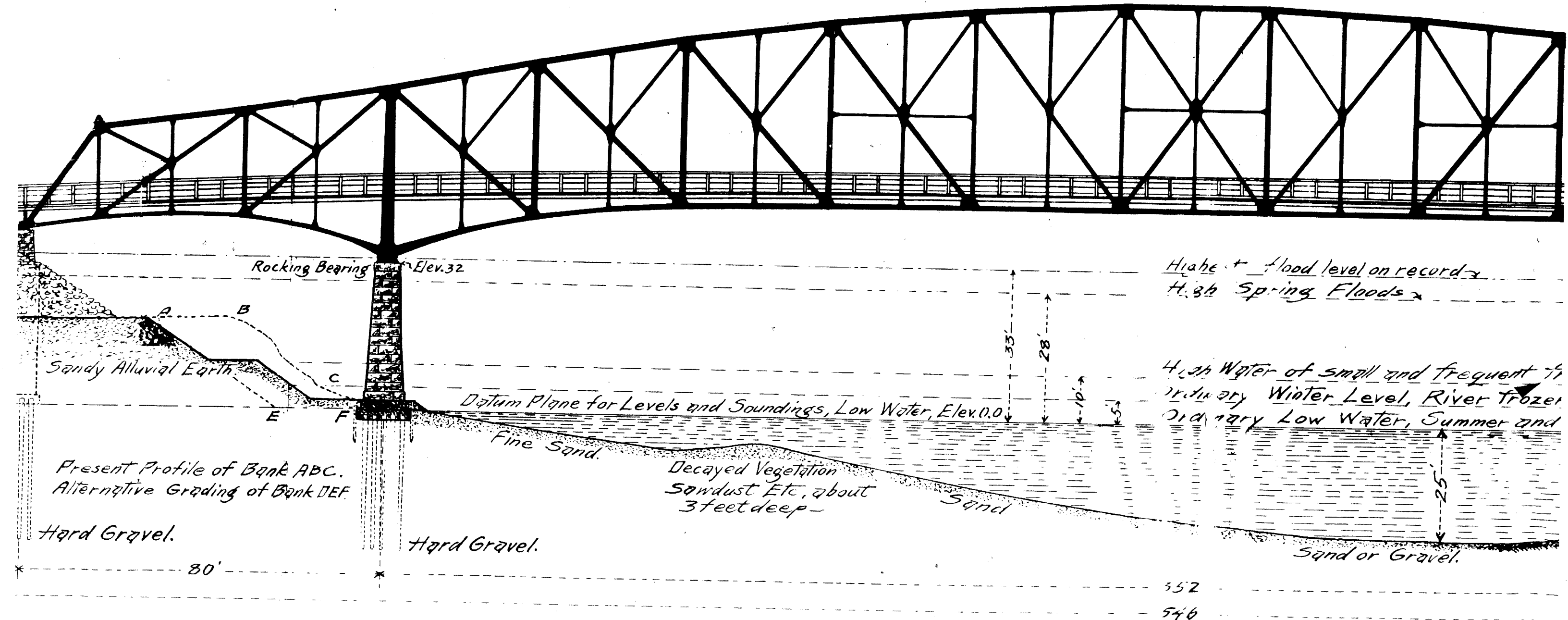
Datum or Base for Layout of Superstructure, Elev. 34.5

5'-0" = 80'-0"

OVER THE
CONNECTICUT RIVER

SHELL MEMORIAL BRIDGE

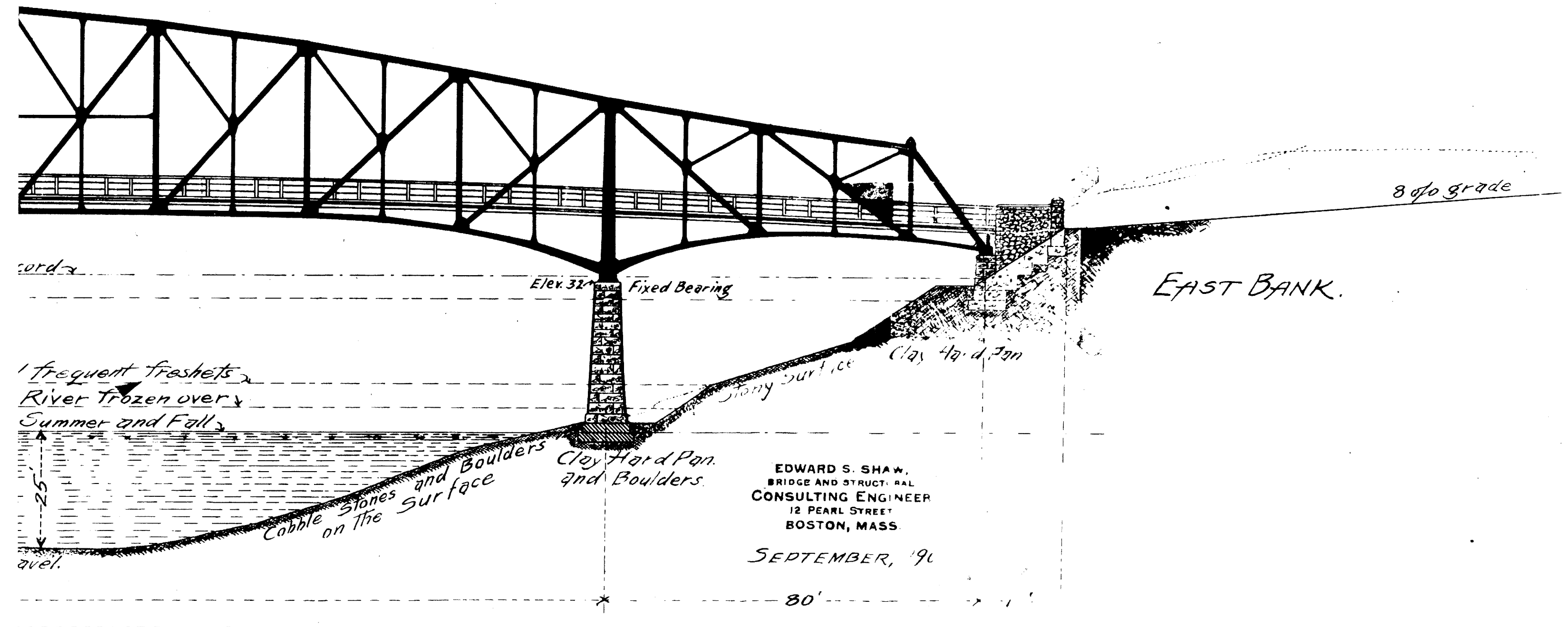
SCALE 2" FT. TO 1 IN.



NOTE, The Profile of the River Bed is Taken under the Northern

BRIDGE,

IN THE TOWN OF
NORTHFIELD, MASS.



EDWARD S. SHAW,
BRIDGE AND STRUCTURAL
CONSULTING ENGINEER
12 PEARL STREET
BOSTON, MASS.

SEPTEMBER, '96

er the Northerly Truss.

SHEET A-1

OVER THE CONNECTICUT RIVER

