

# ENGINEERING NEWS-RECORD

A MCGRAW-HILL PUBLICATION

NOVEMBER 16, 1949

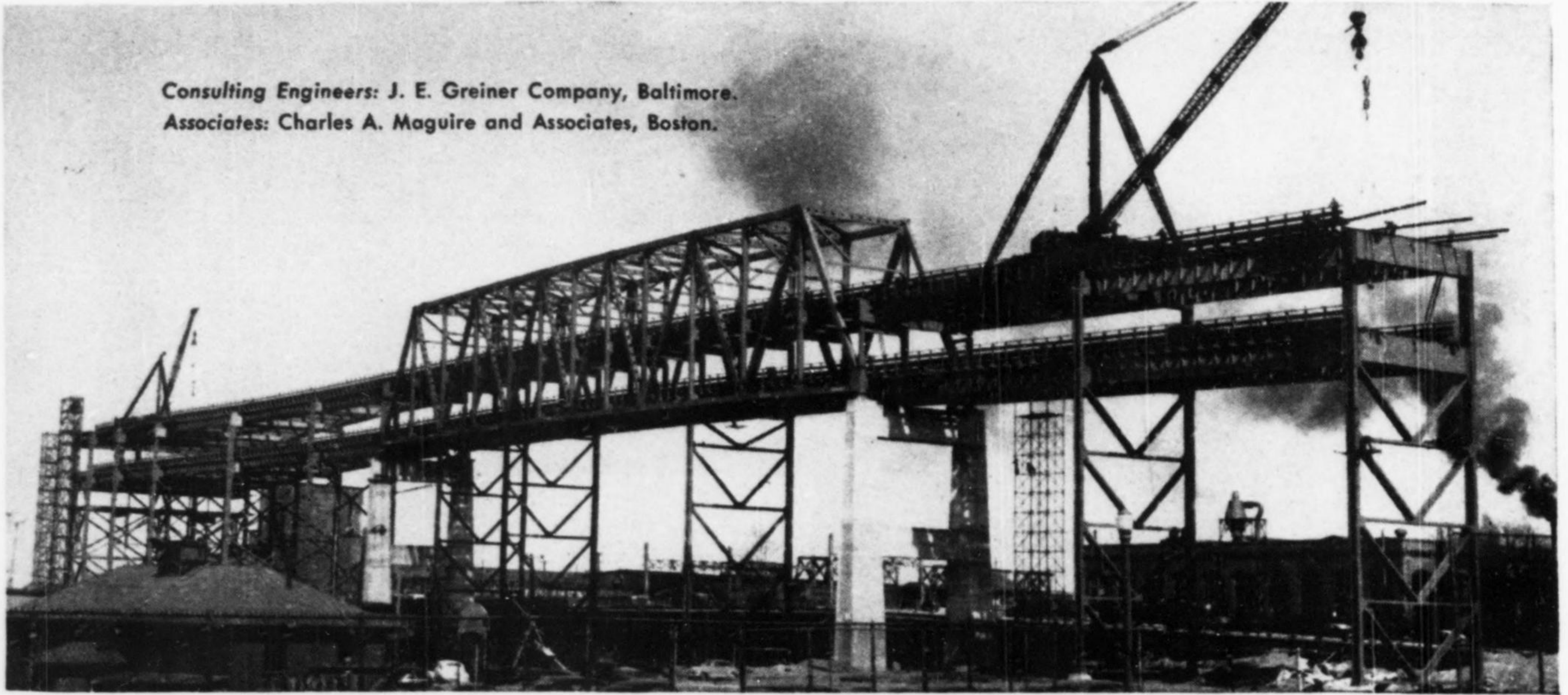


Main span (800-ft.) is closed on Massachusetts' \$27 million Mystic Bridge (see pg. 13)

**CONCRETE COLUMNS PRESTRESSED**  
**DRIVING 65 MILES OF SHEET PILING**



Consulting Engineers: J. E. Greiner Company, Baltimore.  
Associates: Charles A. Maguire and Associates, Boston.



## Steel Double Decker in Boston's Inner Harbor

The Mystic River Bridge, connecting Charlestown and Chelsea, Mass., and becoming part of Boston's heavily-traveled Northeast Expressway, is to be the largest steel bridge ever built in New England. It is scheduled for completion early in 1950.

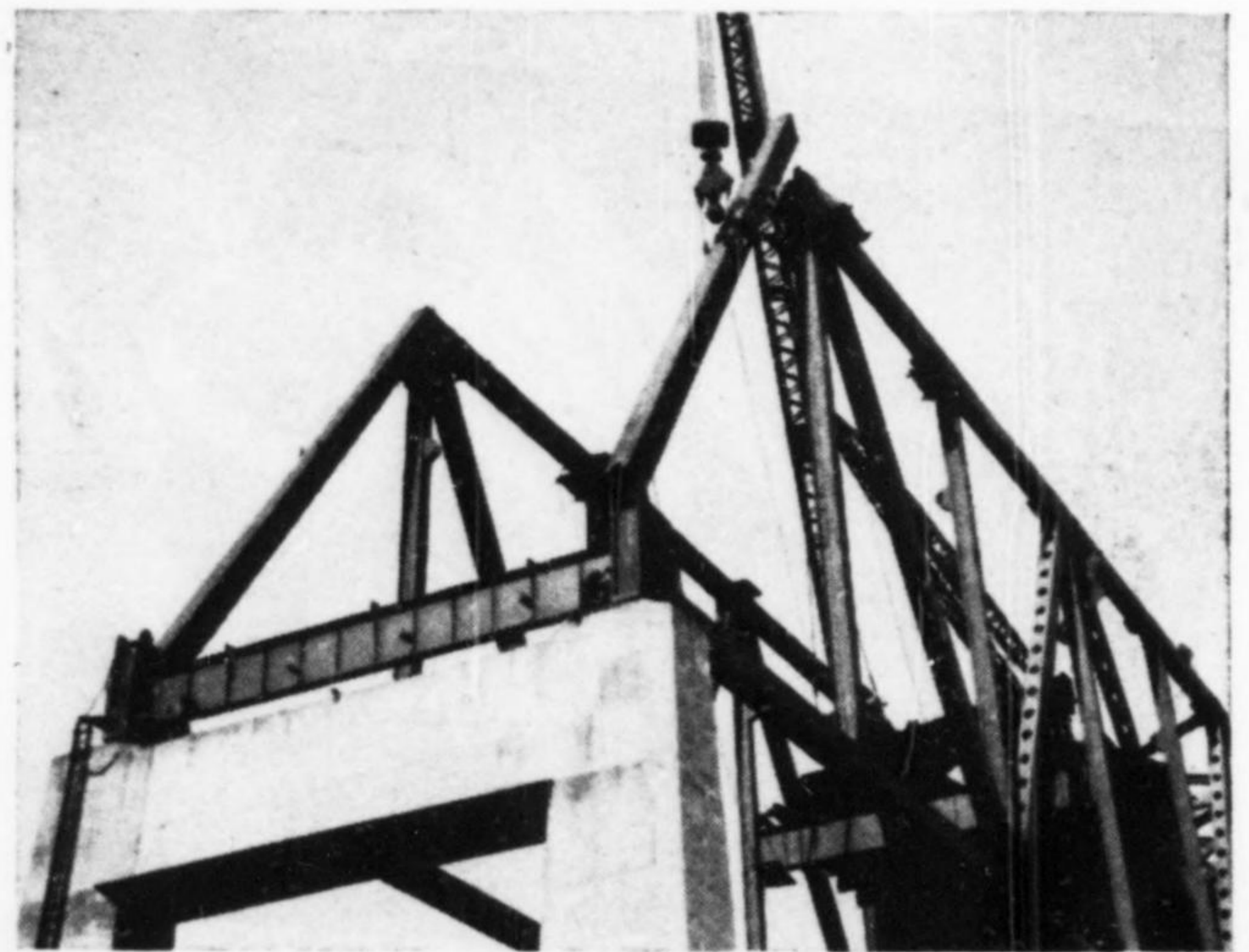
A viaduct more than two miles in length, the Mystic River Bridge will be 135 ft above high water, and will have two roadway levels, each accommodating three lanes of traffic. This double-decker bridge is to consist of a cantilever through-truss unit over the Mystic River, and a simple-span through-truss unit over the Little Mystic Channel. Its construction calls for some 31,000 tons of steel.

As fabricators and erectors of the truss span over the Little Mystic, as well as sections of the northern and southern approaches and toll plaza, Bethlehem is participating in the construction of this noteworthy addition to the Boston skyline.

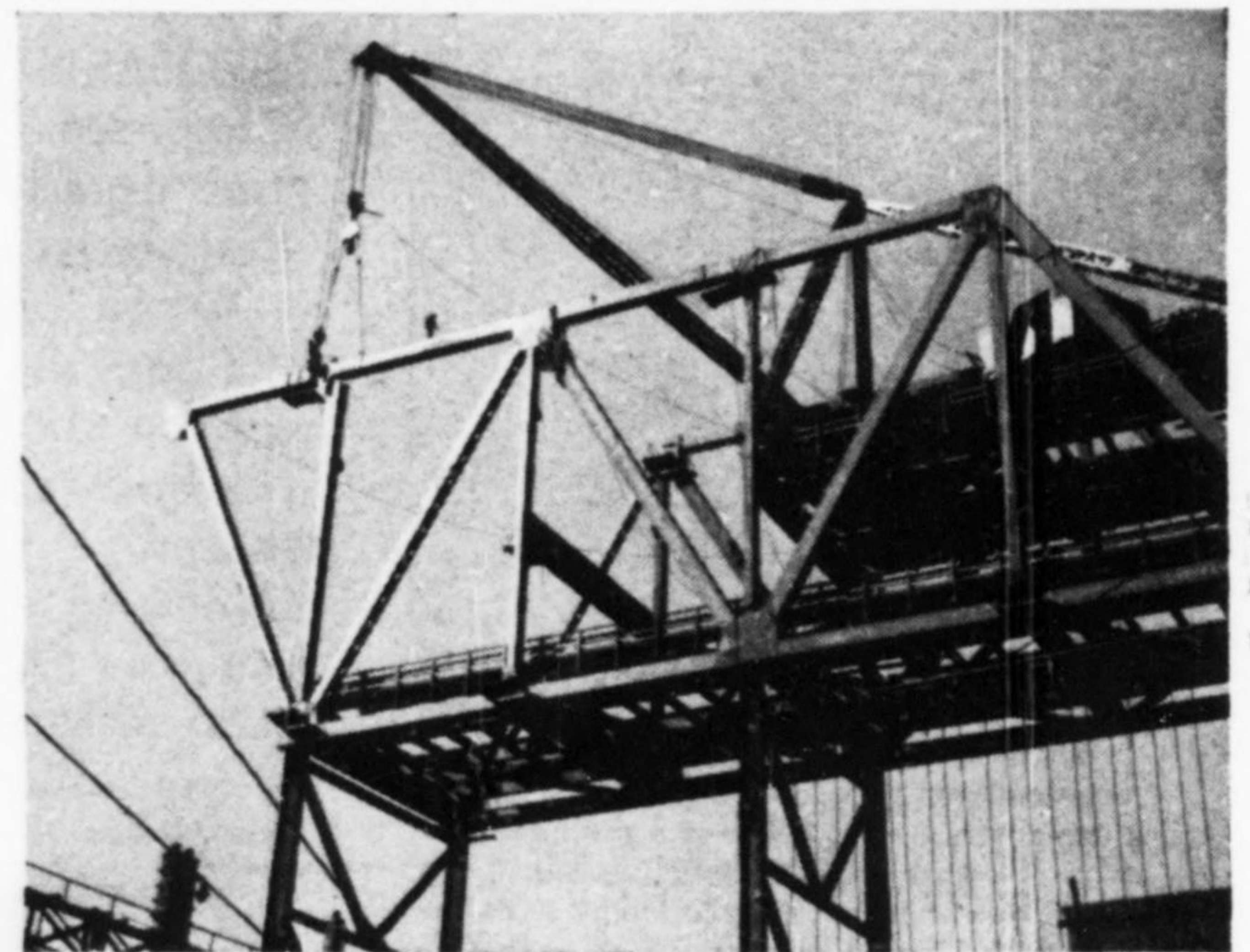
**BETHLEHEM STEEL COMPANY, BETHLEHEM, PA.**

*On the Pacific Coast Bethlehem products are sold by  
Bethlehem Pacific Coast Steel Corporation  
Export Distributor: Bethlehem Steel Export Corporation*

**Fabricated Steel Construction**



Traveler derrick erects diagonal web member for Charlestown approach.

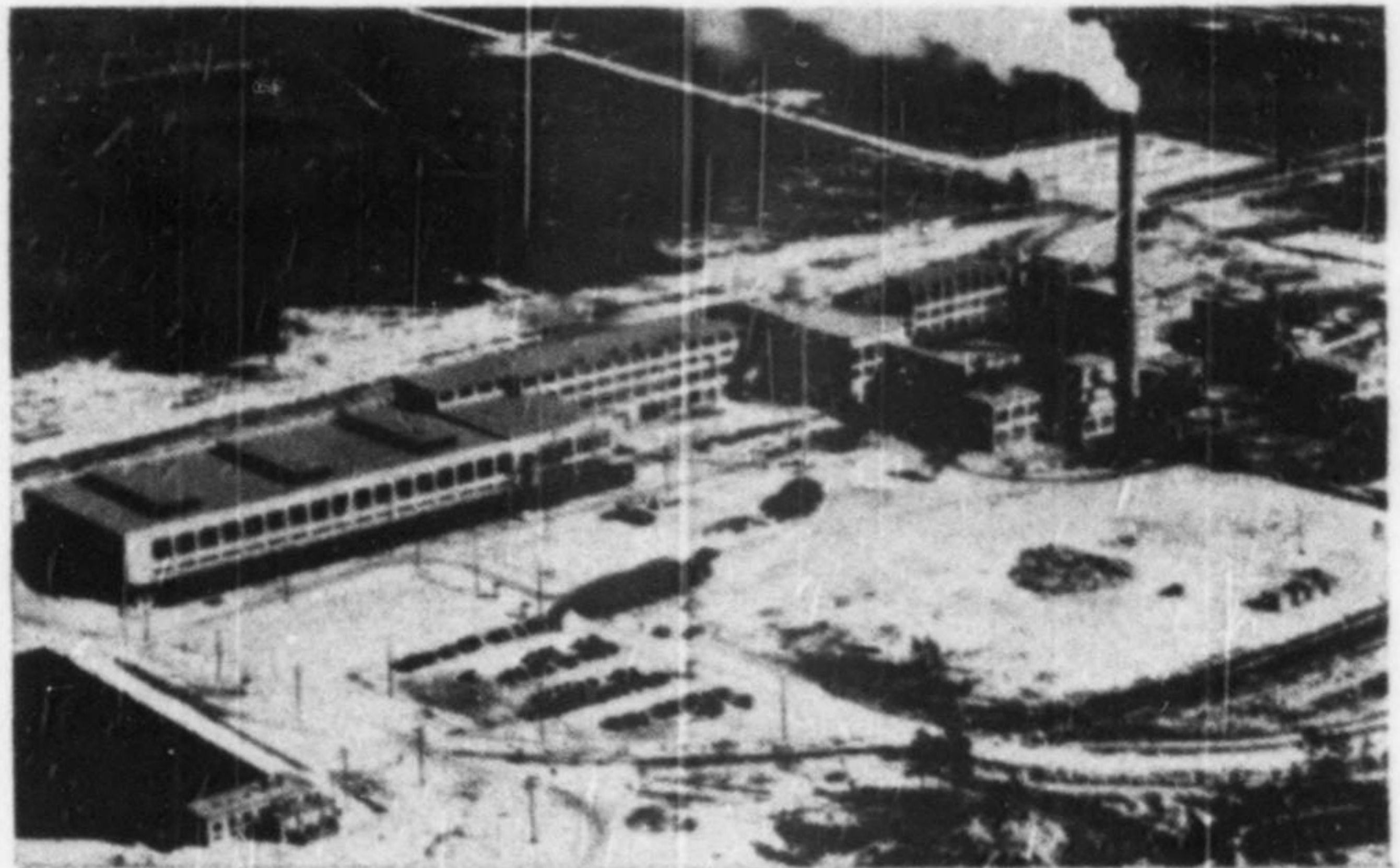


Guided by experienced hands, top chord is inched carefully into place.

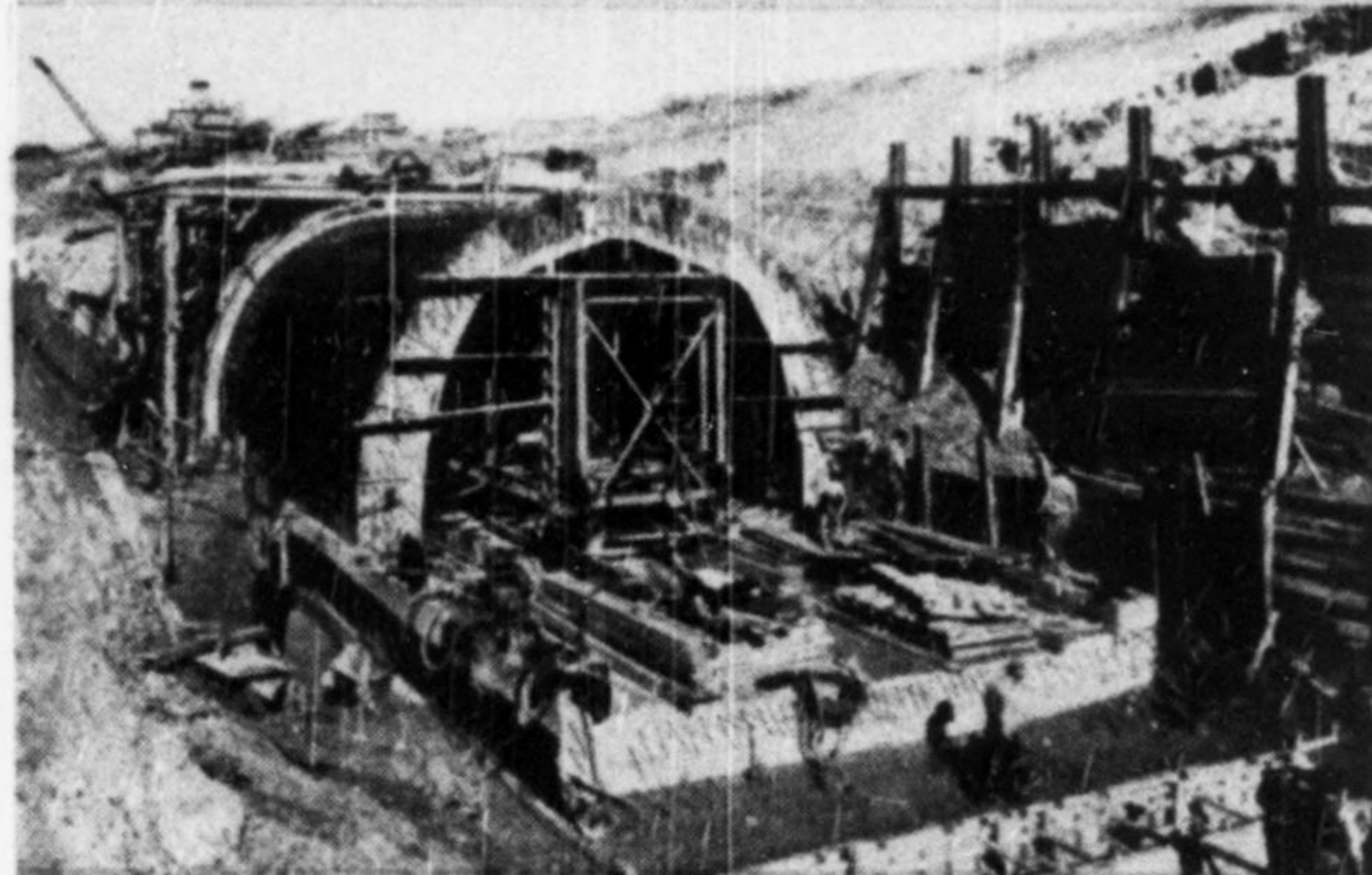




For Merck & Company, M-C & S built a streptomycin plant at Elkton, Va., and simultaneously constructed this processing and packaging plant at Rahway, N. J.



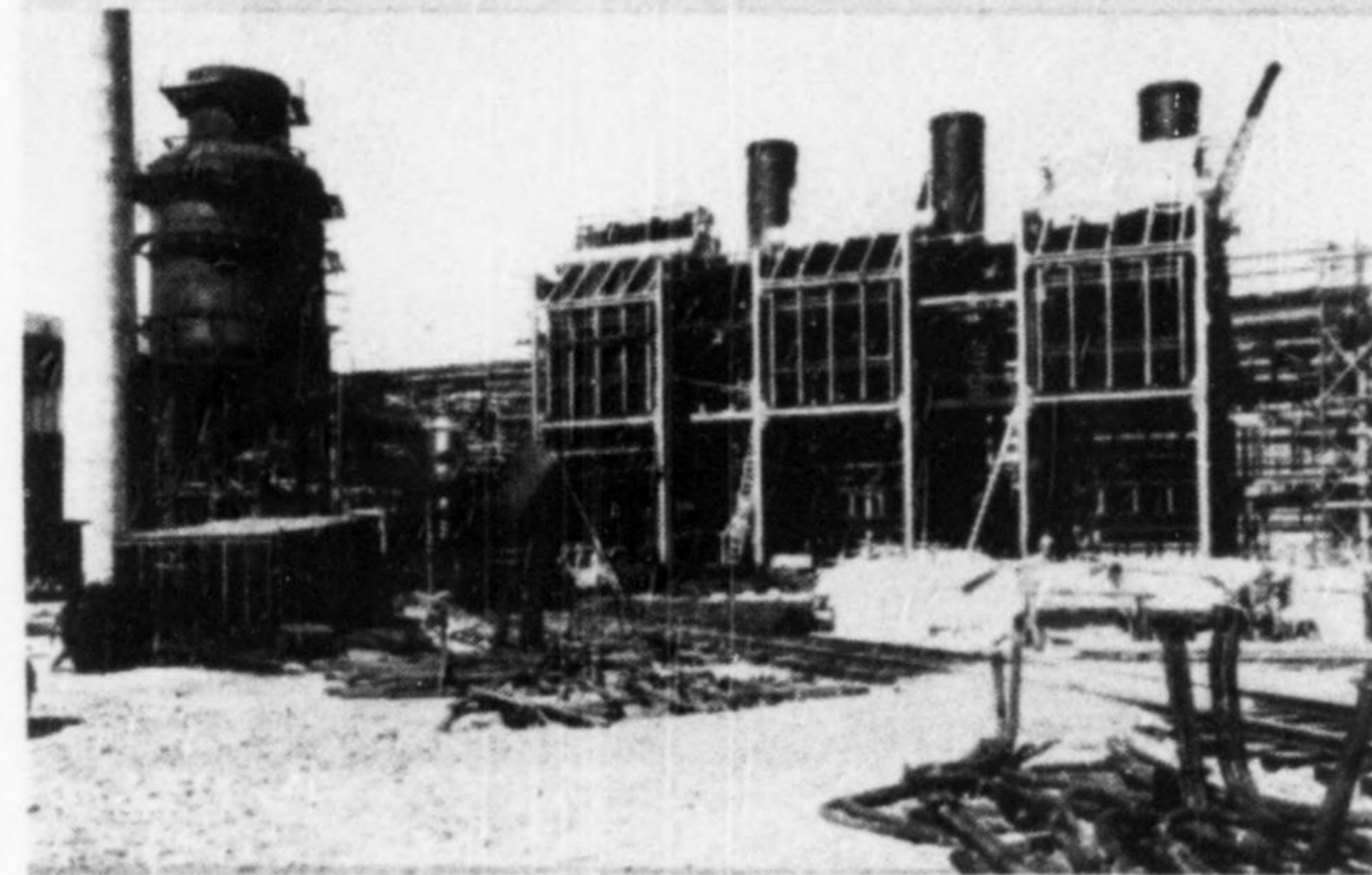
For the Hudson Pulp & Paper Company, Merritt-Chapman & Scott constructed all buildings, purchased and installed equipment in this new plant at Palatka, Fla.



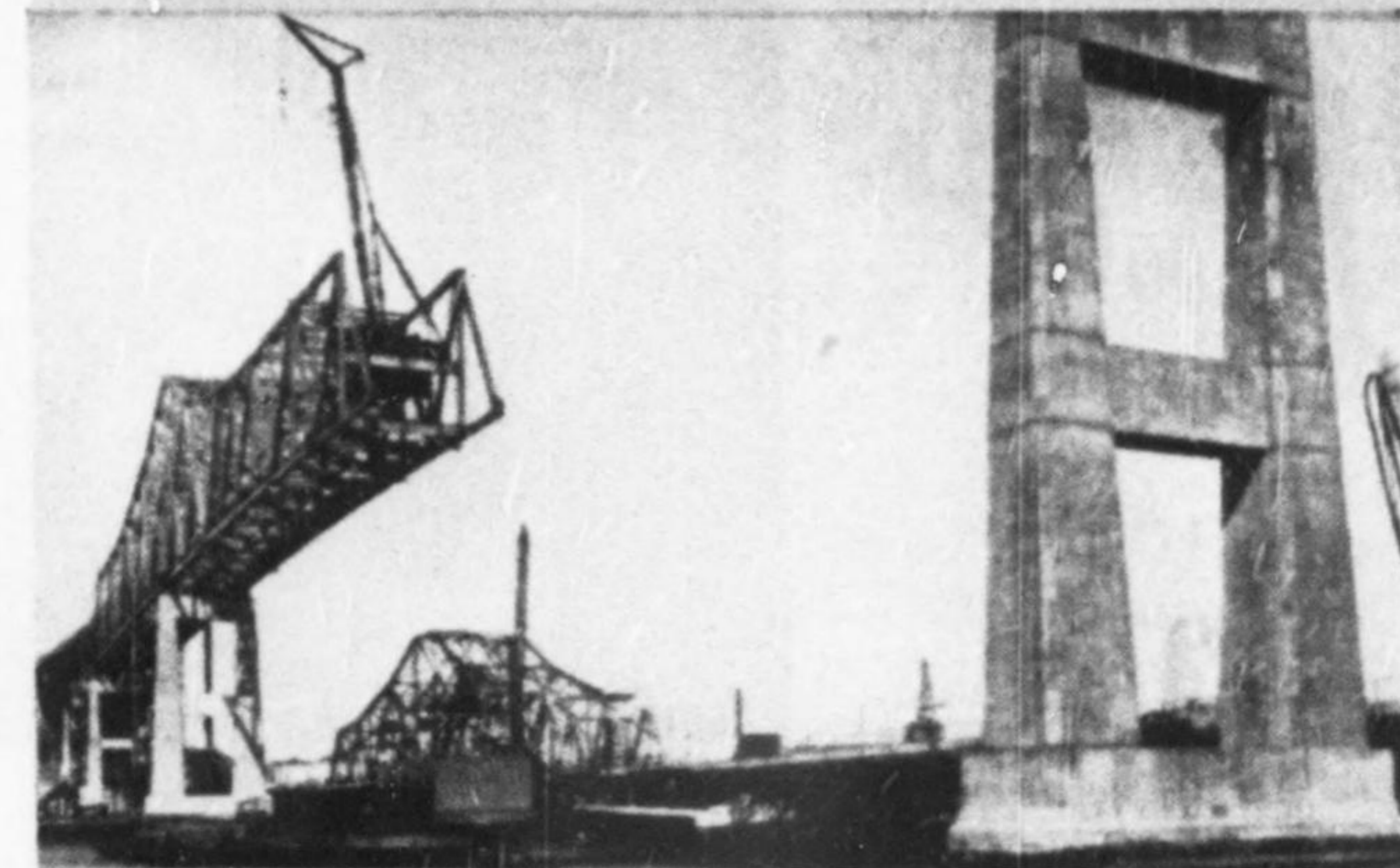
For the Port of Houston, Merritt-Chapman & Scott served as General Contractors in the building of the Washburn Tunnel at Pasadena, Texas.



For the Union Pacific Railroad, Merritt-Chapman & Scott constructed 6 grade separation structures and this 11-span bridge at Long Beach, Calif.



For The Texas Company, Merritt-Chapman & Scott built this new outdoor boiler plant for large oil refinery at Port Arthur, Texas.



For the Mystic River Bridge Authority, Merritt-Chapman & Scott built these deep water piers to support New England's largest sky highway at Boston, Mass.



# MERRITT-CHAPMAN & SCOTT

C O R P O R A T I O N

GENERAL OFFICES:

17 Battery Place, New York 4, N. Y.

BOSTON • CLEVELAND • NEW LONDON • PASADENA, TEXAS