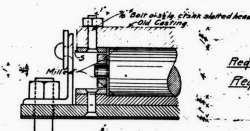
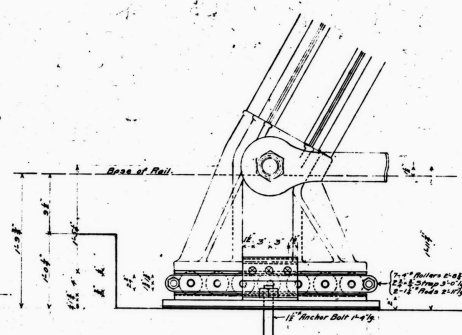
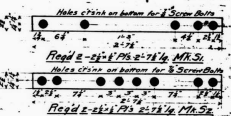
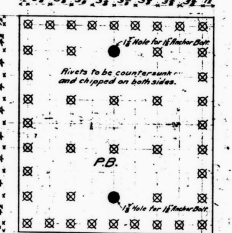
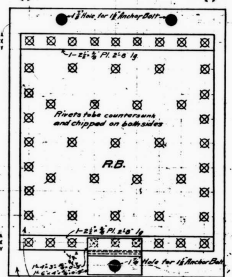


- REQUIRED LIST**
- 10 Laterals L 4x8x3/8
 - 10 LAL 6x6 hand
 - 20 L10 6x3 sham
 - 5 L11
 - 40 Top P's P's

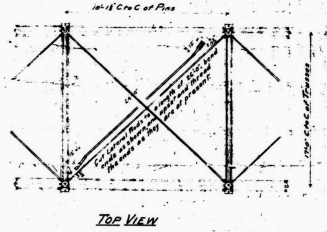
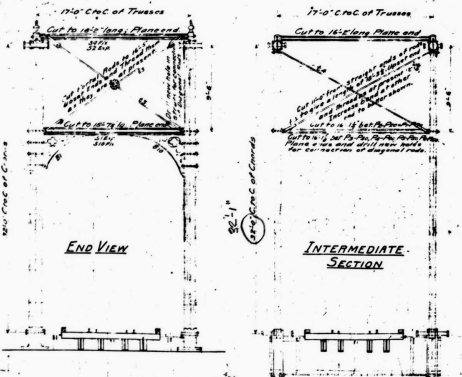


Roller 2 1/2" diam x 2 1/2 H
Roller 2 1/2" diam x 2 1/2 H
Roller 2 1/2" diam x 2 1/2 H



BILL OF NEW MATERIAL

NO.	SECTION	QUANTITY	REMARKS
10	Laterals L 4x8x3/8	10	
10	LAL 6x6 hand	10	
20	L10 6x3 sham	20	
5	L11	5	
40	Top P's P's	40	
...



Note: The Guest P's and Fillers are to be cut to clear the outstanding legs of Stringer Brackets. Cut Flanges of Laterals to clear Rivets in Stringer Flanges.

Note: All Rivets & Dims. All Holes 3/4" Diam. unless noted. Holes in plates to be drilled, all others punched.

N. Y. C. & H. R. R.

HARLEN BR. EASTERN DIVISION
BRIDGE NO. 148, 65-107 CROSSING
OVER CROTON RIVER
MADE BY E. J.

Revised 11-20-20
Revised in 10-20

