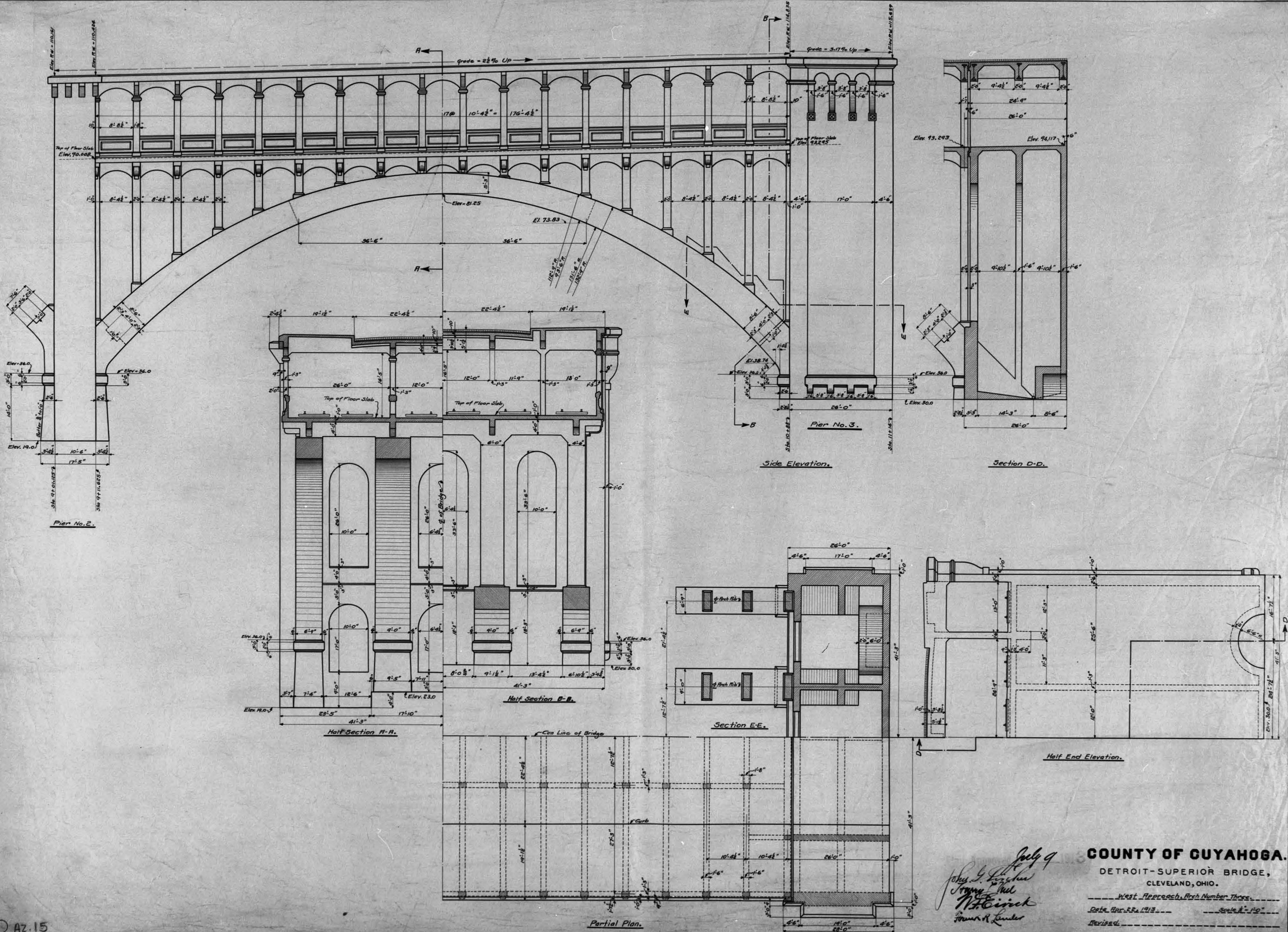


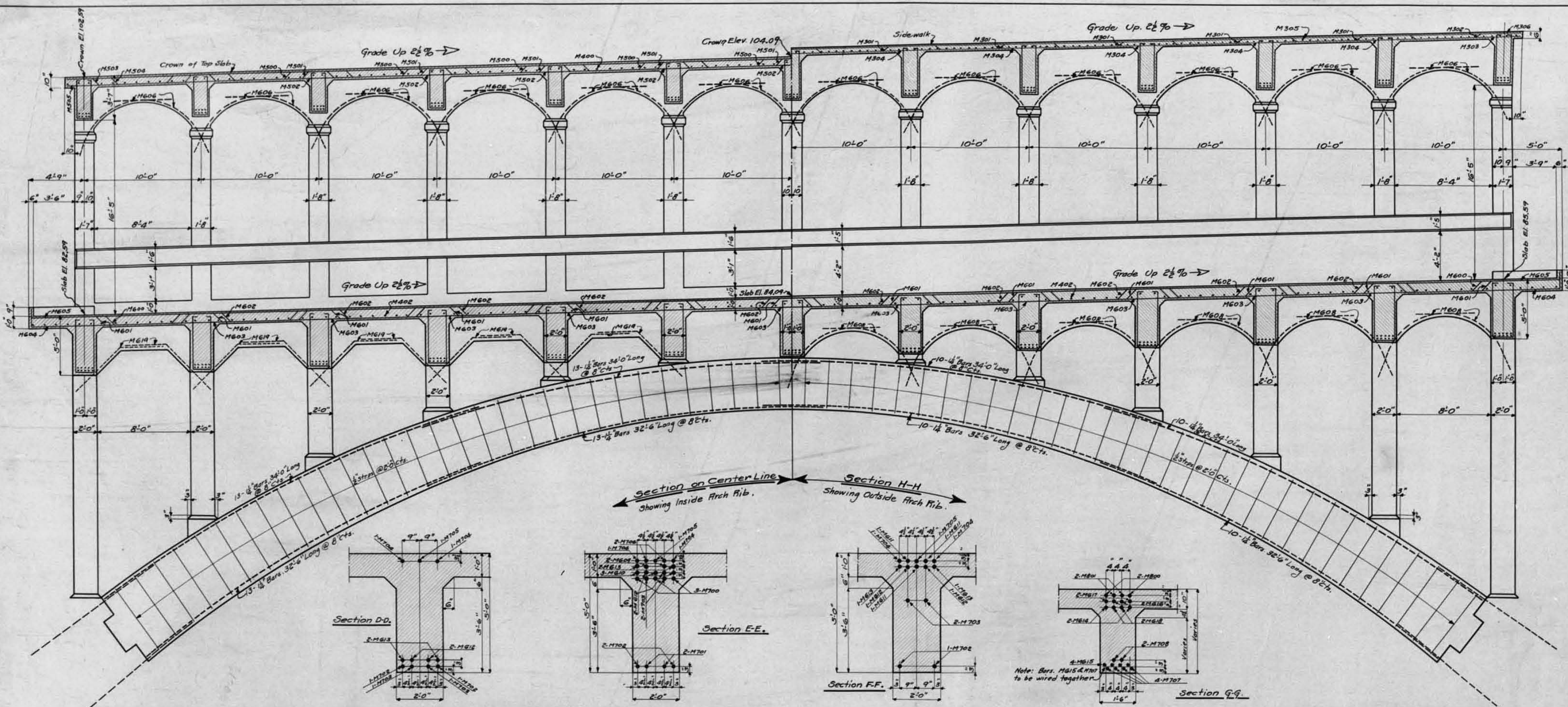
PLAN APPROVED *Sept 25* 1912
John J. ...
 GO. COM.
W. J. ...
 CO. ENGINEER
...
 CO. AUDITOR

COUNTY OF CUYAHOGA
 DETROIT-SUPERIOR BRIDGE
 CLEVELAND, OHIO.
 GENERAL PLAN & ELEVATION
 DATE JULY 12, 1912 SCALE 1"=50'
 REVISED ...



July 9
 J. L. ...
 ...
 ...
 ...

COUNTY OF GUYAHOGA.
 DETROIT-SUPERIOR BRIDGE,
 CLEVELAND, OHIO.
 West Approach, Arch Number Three.
 Date Apr. 22, 1913. Scale 1/4" = 1'-0"
 Revised



Section at Crown
Showing Outside Rib.

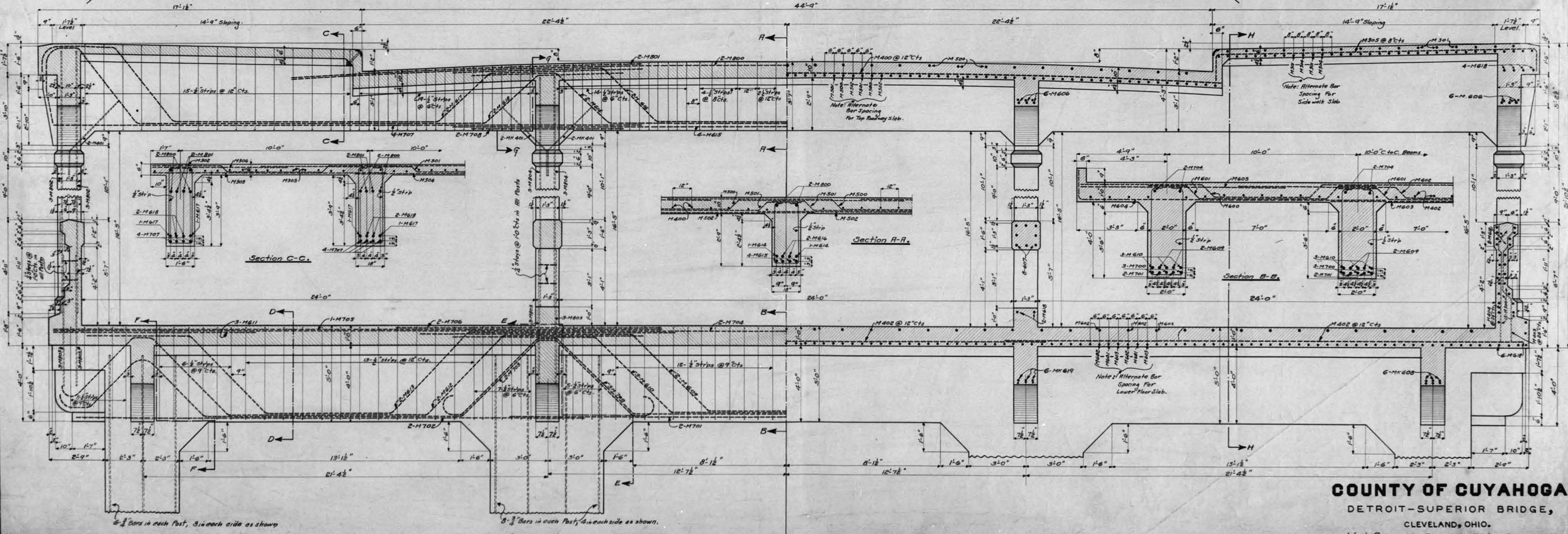
Section at Crown
Showing Inside Rib.

Note:

| | | |
|--------|------|-----------------|
| 3/8" | Bars | Mark 300 to 399 |
| 1/2" | " | " 400 to 499 |
| 5/8" | " | " 500 to 599 |
| 3/4" | " | " 600 to 699 |
| 7/8" | " | " 700 to 799 |
| 1" | " | " 800 to 899 |
| 1 1/8" | " | " 900 to 999 |
| 1 1/2" | " | " 1000 to 1099 |

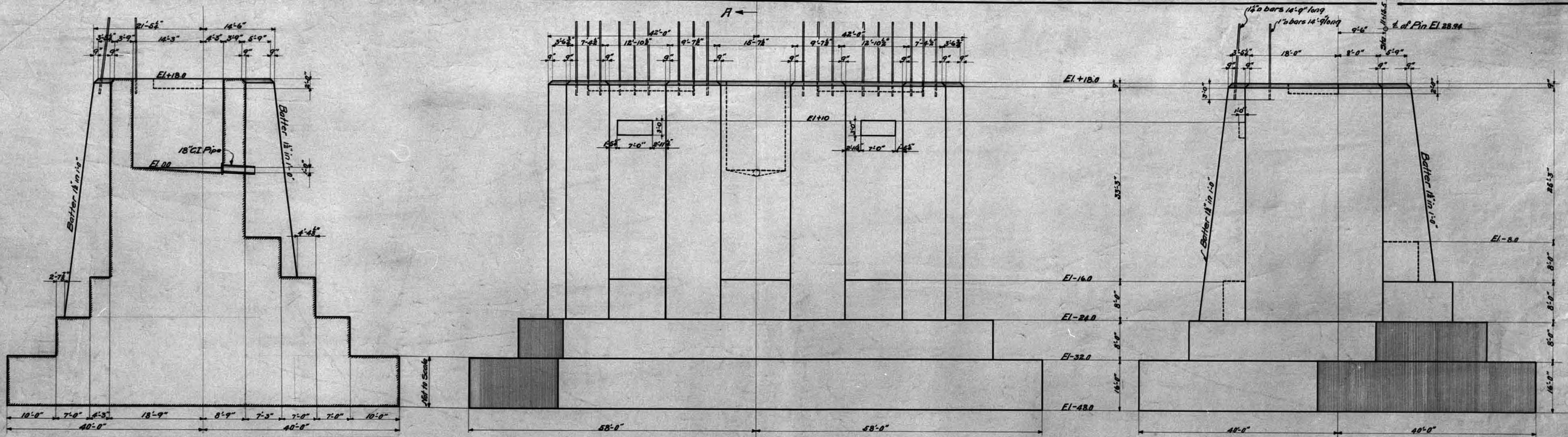
Plan Approved July 9, 1913

Frank R. Linder



COUNTY OF CUYAHOGA.
DETROIT-SUPERIOR BRIDGE,
CLEVELAND, OHIO.

West Approach, Arch No. 1 & Typical Cross Section.
Date: Jan 3, 1913.
Revised: _____



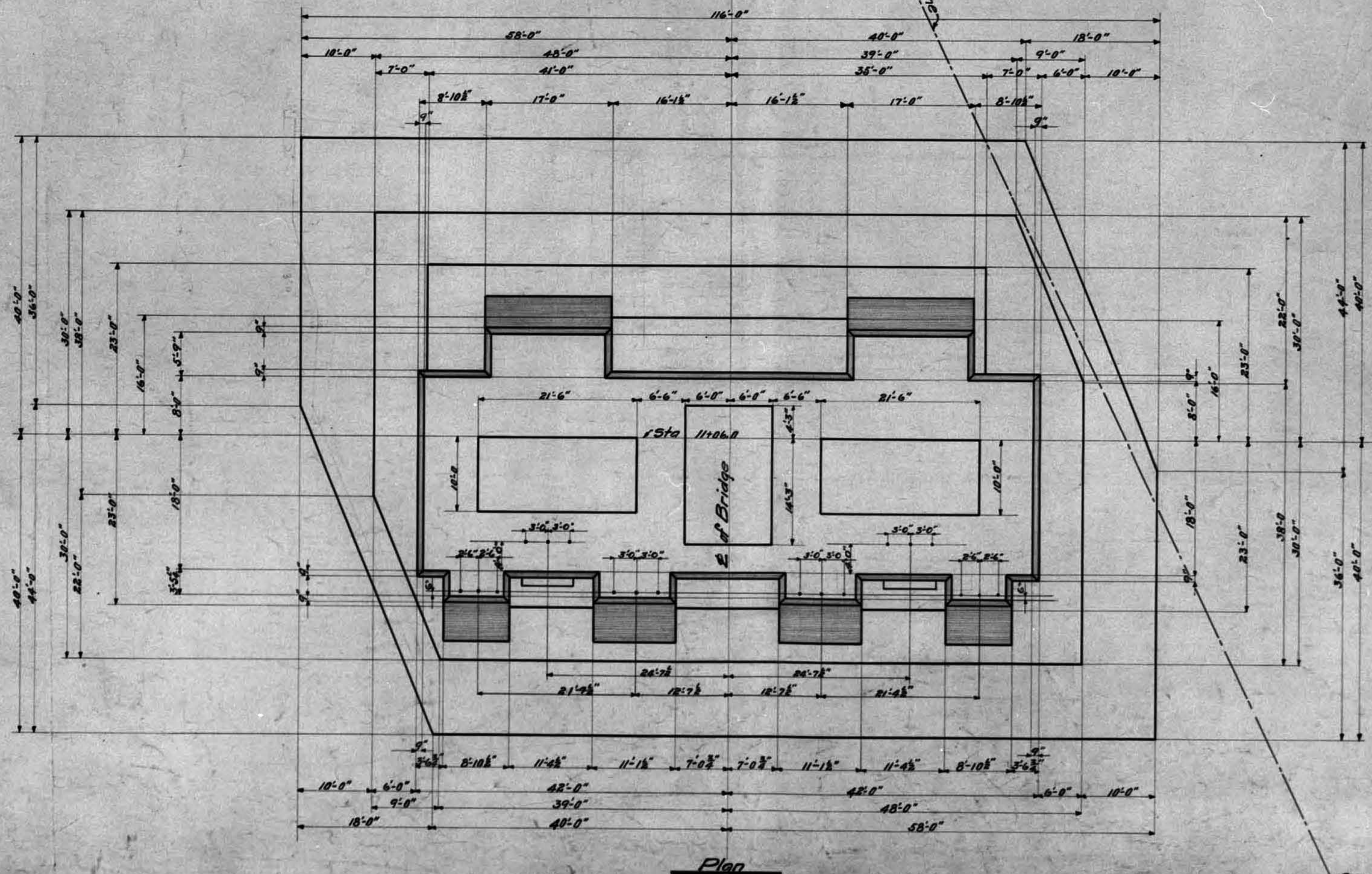
Section A-A

Side Elevation

End Elevation

Note!
The dimensions for the stepping off of this pier are figured on the assumption that the concrete is deposited in air and not under water.

Bill of Bars
12-1/2" bars 14'-9" long
6-1" " 14'-9" "



Plan

P. H. Steyer
J. S. Ludrus
John W. Manning
W. H. Smith

COUNTY OF CUYAHOGA
DETROIT SUPERIOR BRIDGE
CLEVELAND OHIO
Foundation for West Pier of River Span
DATE Feb. 6, 1914. SCALE 1/2" = 1'-0"
REVISED 8/3/14

A2.30

Corrected *A. H. Giesinger*
Bridge Engineer

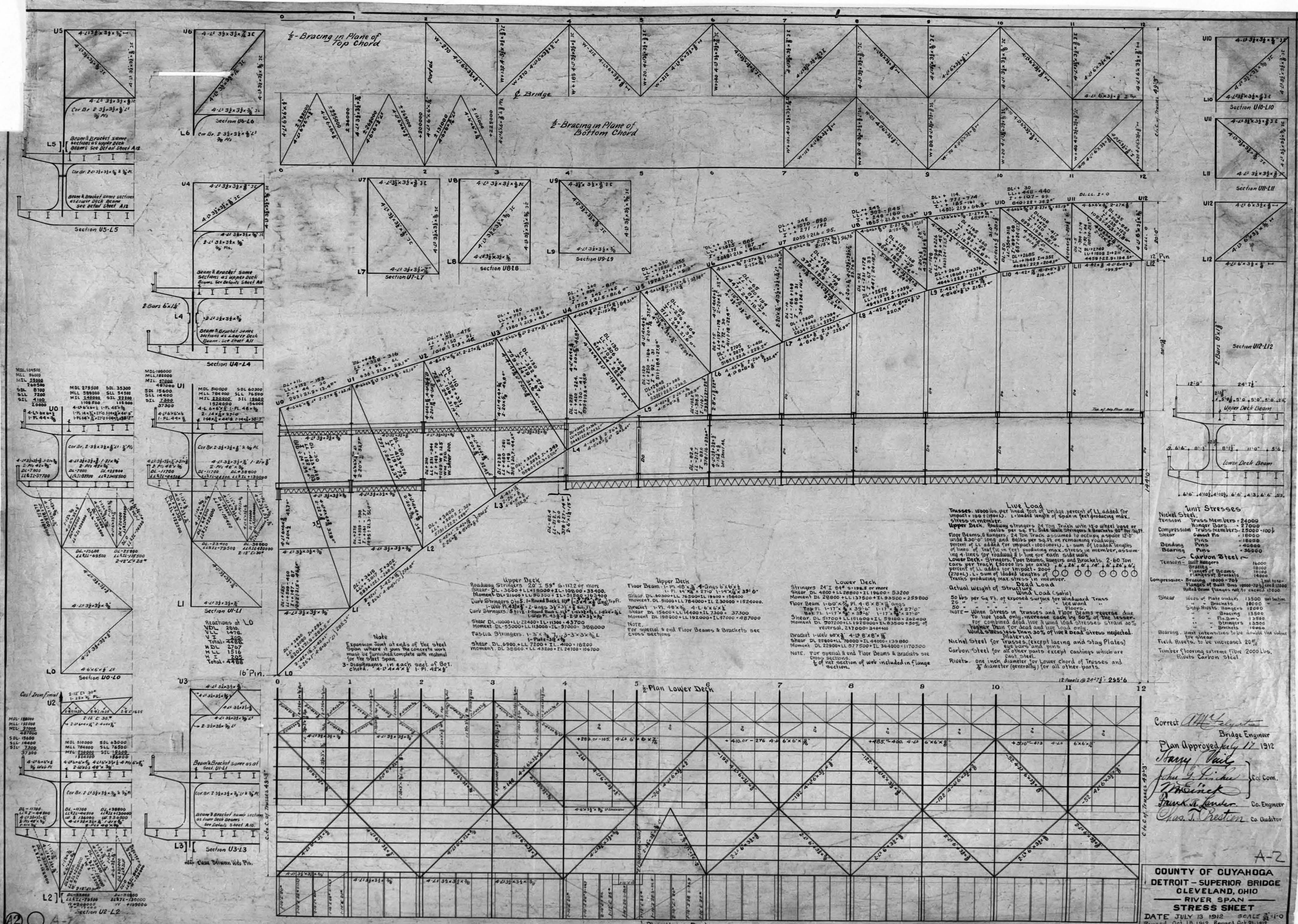


Table of material specifications for various steel members.

| | |
|-------------|------------|
| M.L. 104500 | M.L. 96000 |
| M.L. 32900 | M.L. 32900 |
| S.L. 8700 | S.L. 8700 |
| S.L. 7200 | S.L. 7200 |
| S.L. 4100 | S.L. 4100 |
| S.L. 2000 | S.L. 2000 |

Table of material specifications for various steel members.

| | |
|-------------|-------------|
| M.L. 275000 | S.L. 35300 |
| M.L. 299000 | S.L. 34500 |
| M.L. 242000 | S.L. 32300 |
| M.L. 110800 | S.L. 118000 |
| M.L. 7300 | S.L. 7300 |
| M.L. 37300 | S.L. 37300 |

Table of material specifications for various steel members.

| | |
|-------------|------------|
| M.L. 104500 | M.L. 96000 |
| M.L. 32900 | M.L. 32900 |
| S.L. 8700 | S.L. 8700 |
| S.L. 7200 | S.L. 7200 |
| S.L. 4100 | S.L. 4100 |
| S.L. 2000 | S.L. 2000 |

Table of material specifications for various steel members.

| | |
|-------------|------------|
| M.L. 104500 | M.L. 96000 |
| M.L. 32900 | M.L. 32900 |
| S.L. 8700 | S.L. 8700 |
| S.L. 7200 | S.L. 7200 |
| S.L. 4100 | S.L. 4100 |
| S.L. 2000 | S.L. 2000 |

Table of material specifications for various steel members.

| | |
|-------------|------------|
| M.L. 104500 | M.L. 96000 |
| M.L. 32900 | M.L. 32900 |
| S.L. 8700 | S.L. 8700 |
| S.L. 7200 | S.L. 7200 |
| S.L. 4100 | S.L. 4100 |
| S.L. 2000 | S.L. 2000 |

Table of material specifications for various steel members.

| | |
|-------------|------------|
| M.L. 104500 | M.L. 96000 |
| M.L. 32900 | M.L. 32900 |
| S.L. 8700 | S.L. 8700 |
| S.L. 7200 | S.L. 7200 |
| S.L. 4100 | S.L. 4100 |
| S.L. 2000 | S.L. 2000 |

Table of material specifications for various steel members.

| | |
|-------------|------------|
| M.L. 104500 | M.L. 96000 |
| M.L. 32900 | M.L. 32900 |
| S.L. 8700 | S.L. 8700 |
| S.L. 7200 | S.L. 7200 |
| S.L. 4100 | S.L. 4100 |
| S.L. 2000 | S.L. 2000 |

Table of material specifications for various steel members.

| | |
|-------------|------------|
| M.L. 104500 | M.L. 96000 |
| M.L. 32900 | M.L. 32900 |
| S.L. 8700 | S.L. 8700 |
| S.L. 7200 | S.L. 7200 |
| S.L. 4100 | S.L. 4100 |
| S.L. 2000 | S.L. 2000 |

Table of material specifications for various steel members.

| | |
|-------------|------------|
| M.L. 104500 | M.L. 96000 |
| M.L. 32900 | M.L. 32900 |
| S.L. 8700 | S.L. 8700 |
| S.L. 7200 | S.L. 7200 |
| S.L. 4100 | S.L. 4100 |
| S.L. 2000 | S.L. 2000 |

Table of material specifications for various steel members.

| | |
|-------------|------------|
| M.L. 104500 | M.L. 96000 |
| M.L. 32900 | M.L. 32900 |
| S.L. 8700 | S.L. 8700 |
| S.L. 7200 | S.L. 7200 |
| S.L. 4100 | S.L. 4100 |
| S.L. 2000 | S.L. 2000 |

½-Bracing in Plane of Top Chord

½-Bracing in Plane of Bottom Chord

Live Load
Trusses, 10000 lbs. per lineal foot of bridge, percent of LL added for impact = 100 (1904). L-loaded length of span in feet producing max. stress in member.

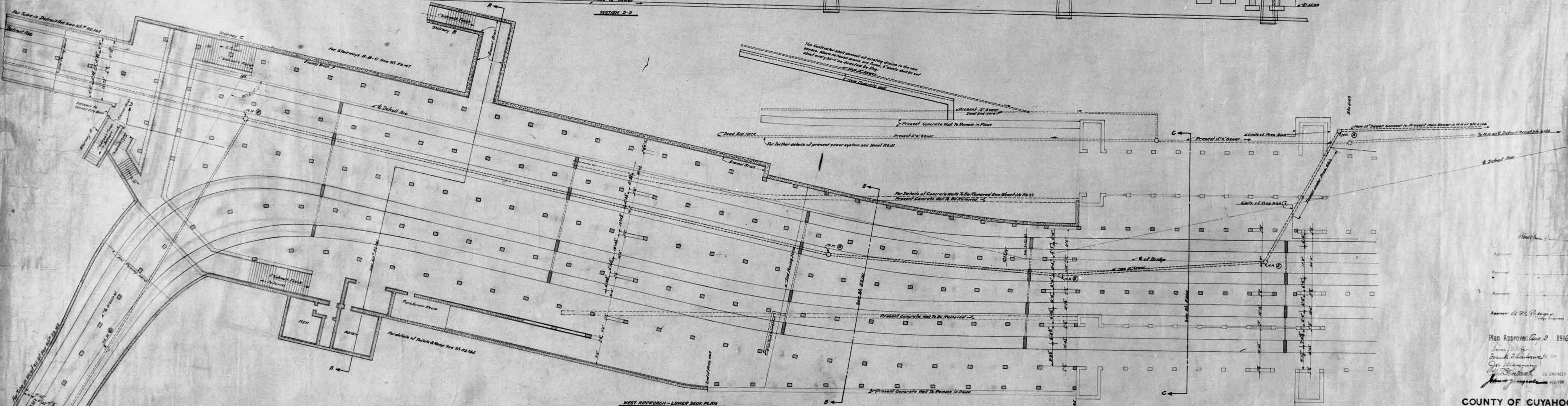
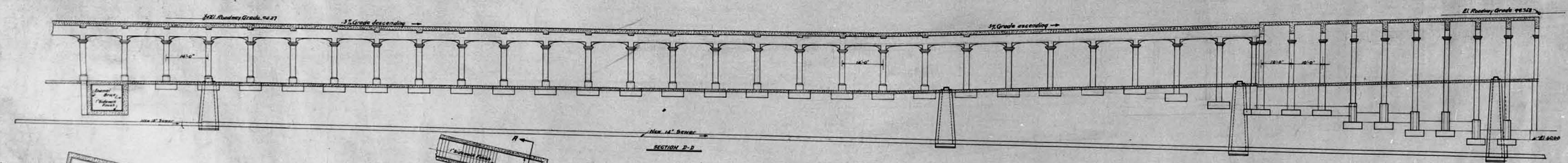
Unit Stresses
Nickel Steel
Tension - Truss Members - 24000
Compression - Hanger Bars - 27000
Compression - Truss Members - 25000-100%

Upper Deck
Roadway Stringers 20" x 59" 5-1172 or more
SHEAR DL 3000 + LL 19000 + IL 10800 = 33400
Moment DL 21000 + LL 90300 + IL 51800 = 163100

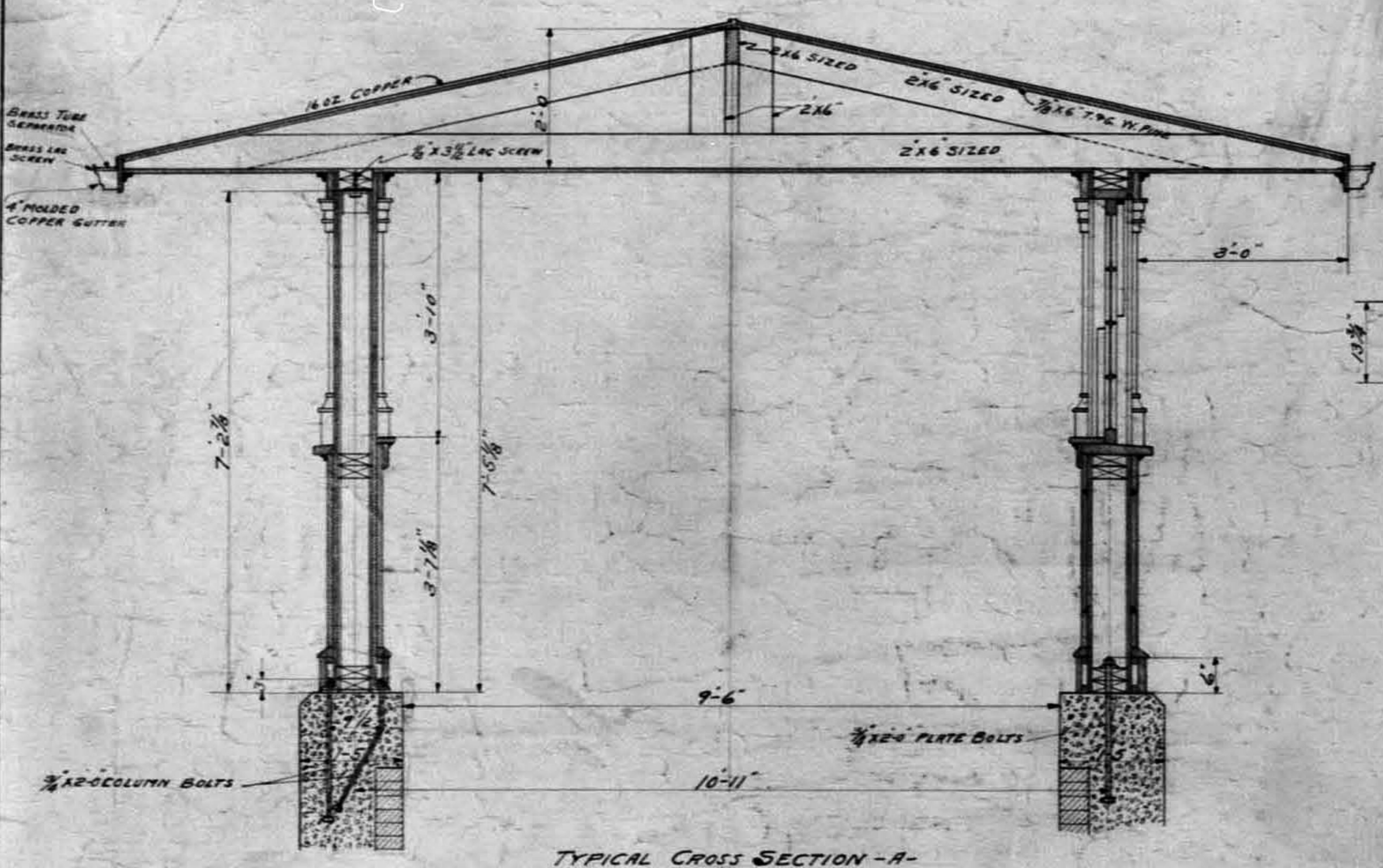
Lower Deck
Stringers 24" x 84" 6-1985 or more
SHEAR DL 4800 + LL 28800 + IL 19600 = 53200
Moment DL 28800 + LL 137500 + IL 93500 = 259800

Correct
Bridge Engineer
Plan Approved July 17 1912
John G. Fisher
Frank A. Under
Chas. A. Preston

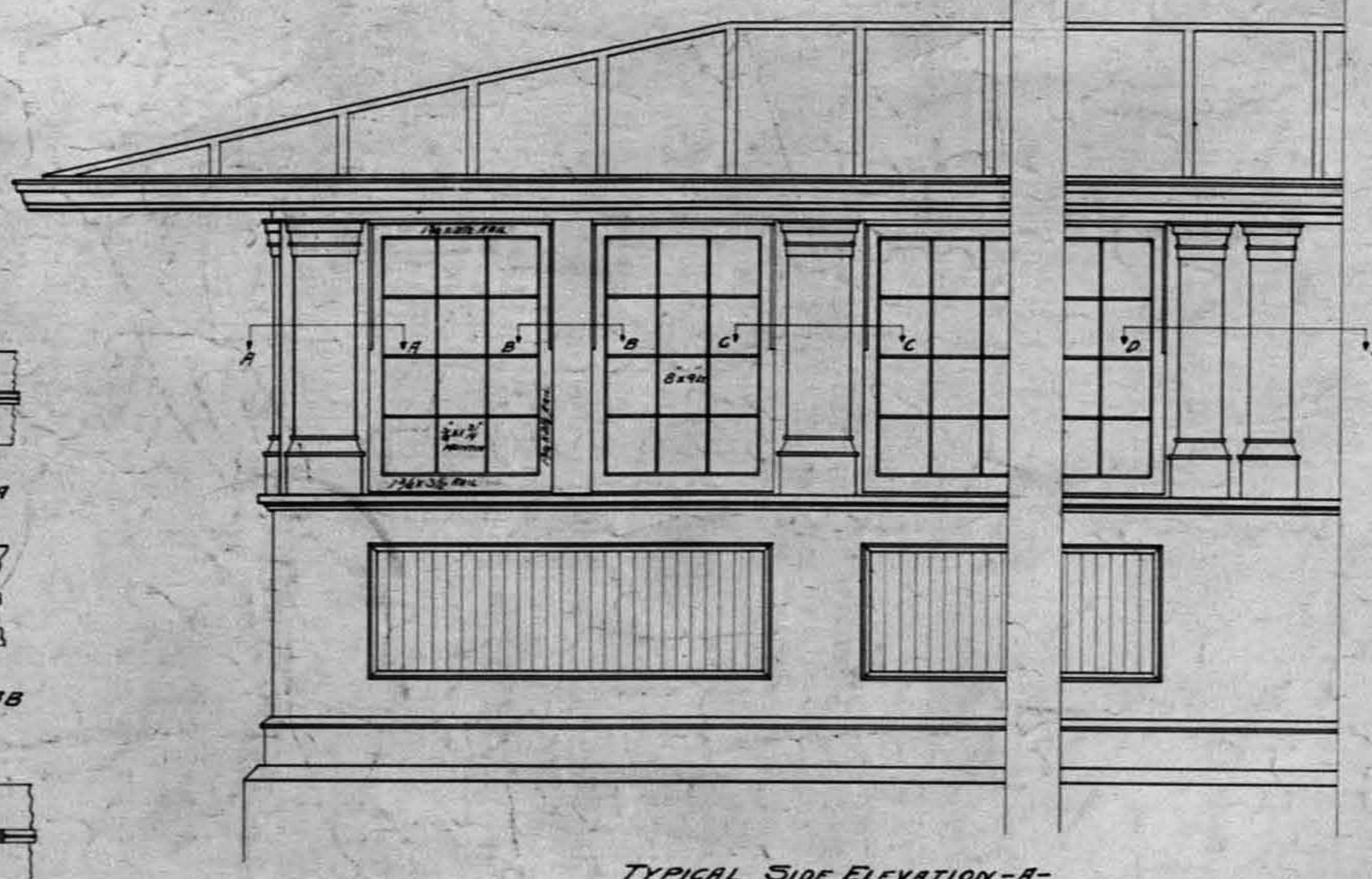
COUNTY OF CUYAHOGA
DETROIT - SUPERIOR BRIDGE
CLEVELAND, OHIO
RIVER SPAN
STRESS SHEET
DATE JULY 13 1912 SCALE 1/8" = 1'-0"
Revised Oct. 18 1912 Revised Oct. 21 1912
Revised Nov. 22 1912



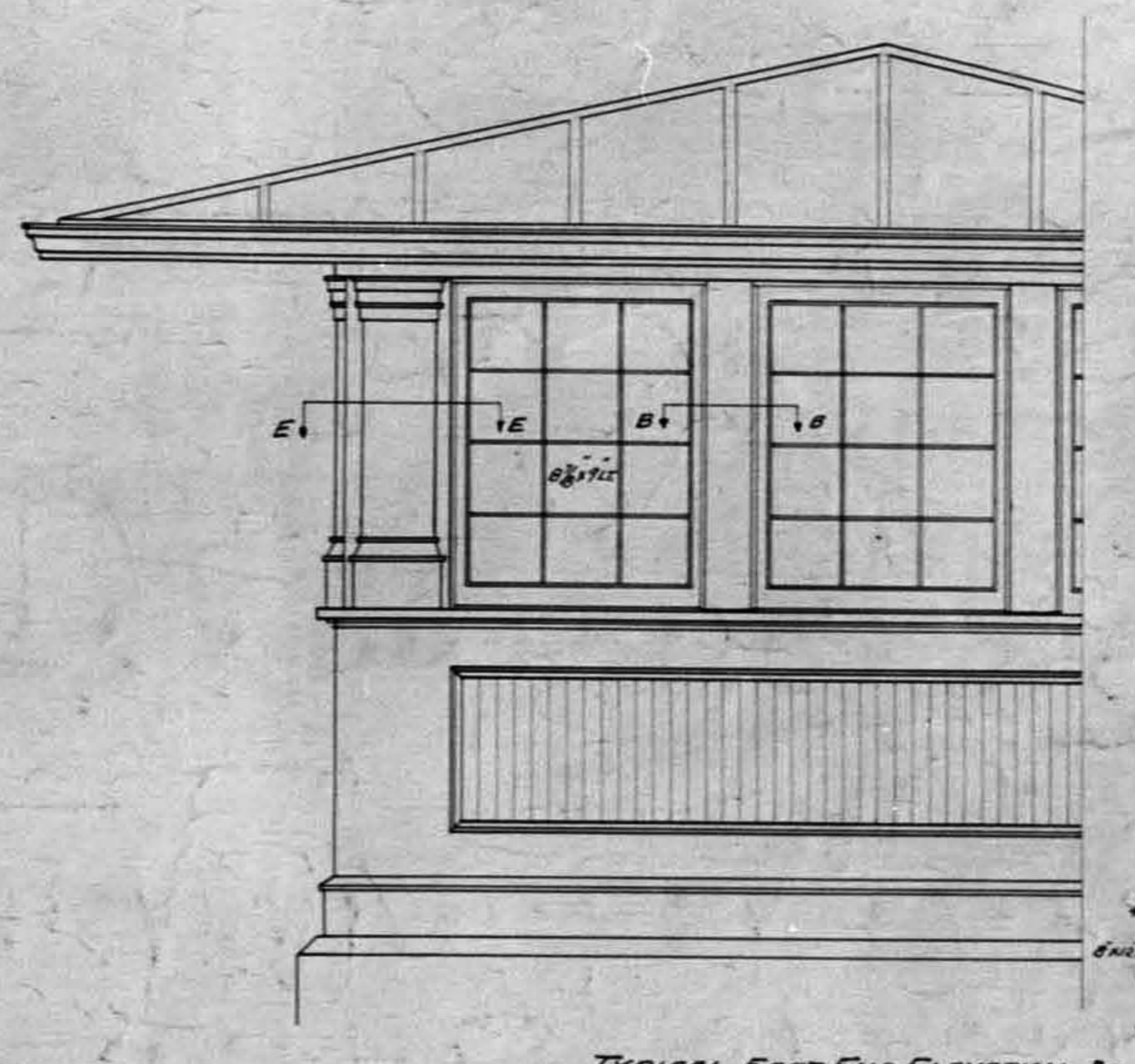
Approved: *C. H. Peasger*
 City Engineer
 Plan Approved Aug 2 1916
 Louis W. Miller
 Frank Schaefer
 J. P. Schaefer
 J. P. Schaefer
 COUNTY OF CUYAHOGA.
 DETROIT SUPERIOR BRIDGE
 CLEVELAND, OHIO.
 Lower Deck Plan - West Approach.
 Date, Aug. 2, 1916. Scale, 1"=50'.



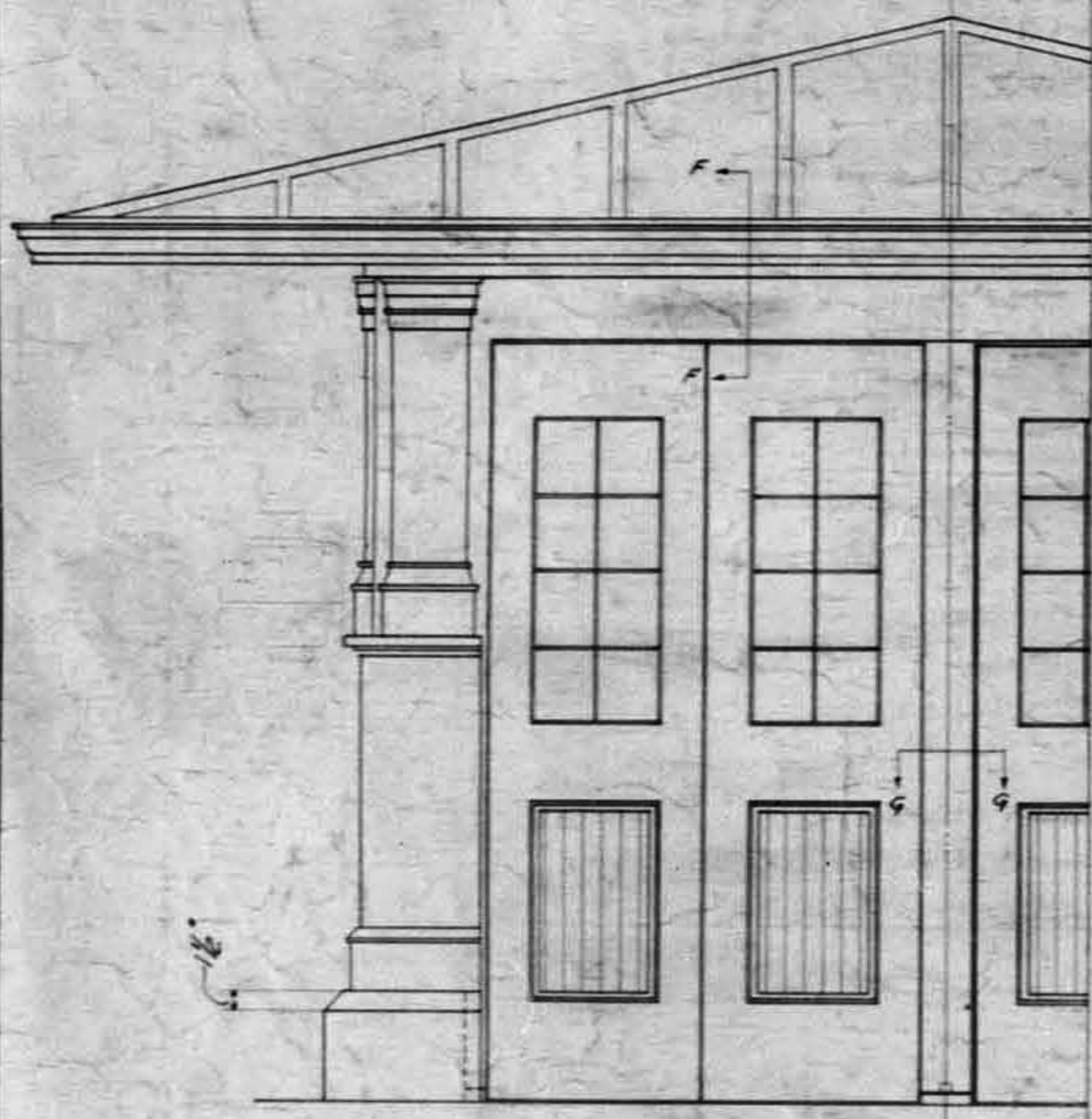
TYPICAL CROSS SECTION - A



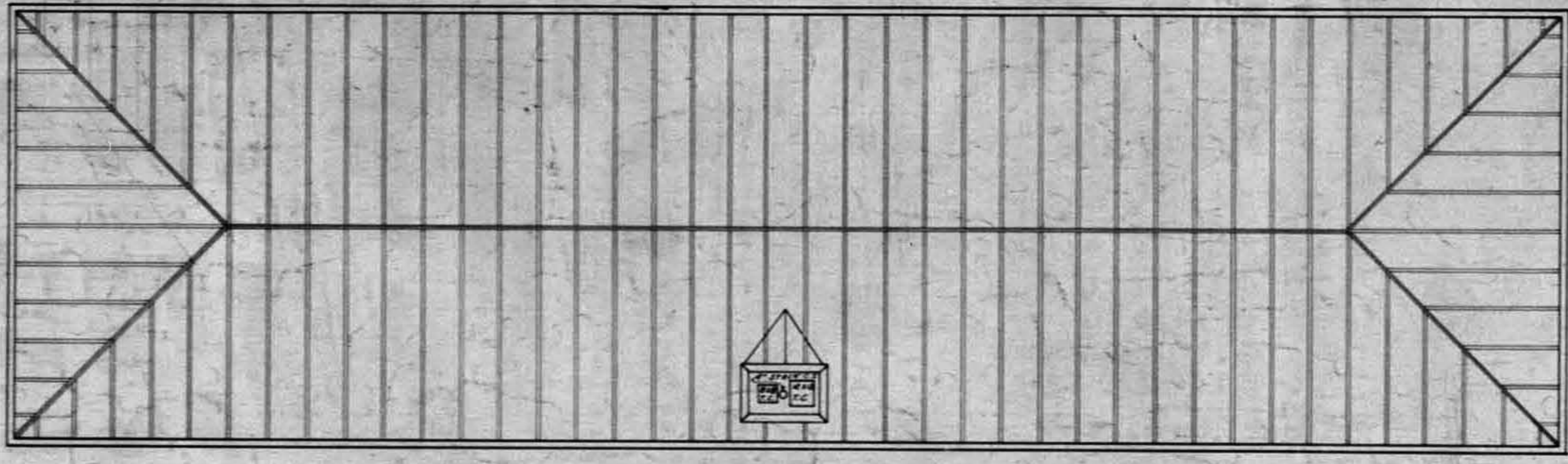
TYPICAL SIDE ELEVATION - A



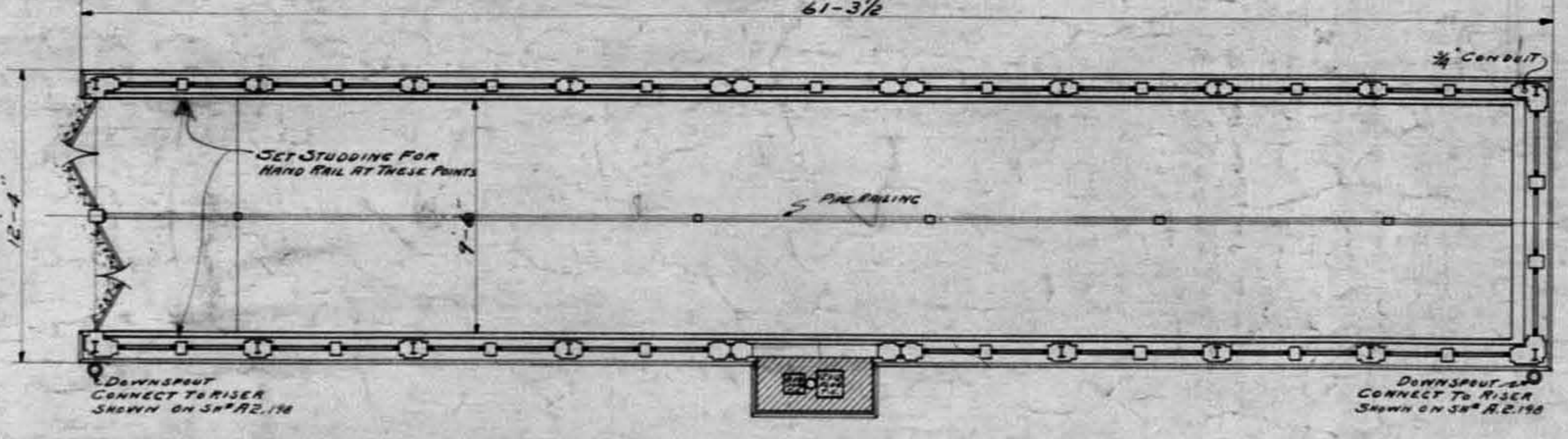
TYPICAL EAST END ELEVATION - A



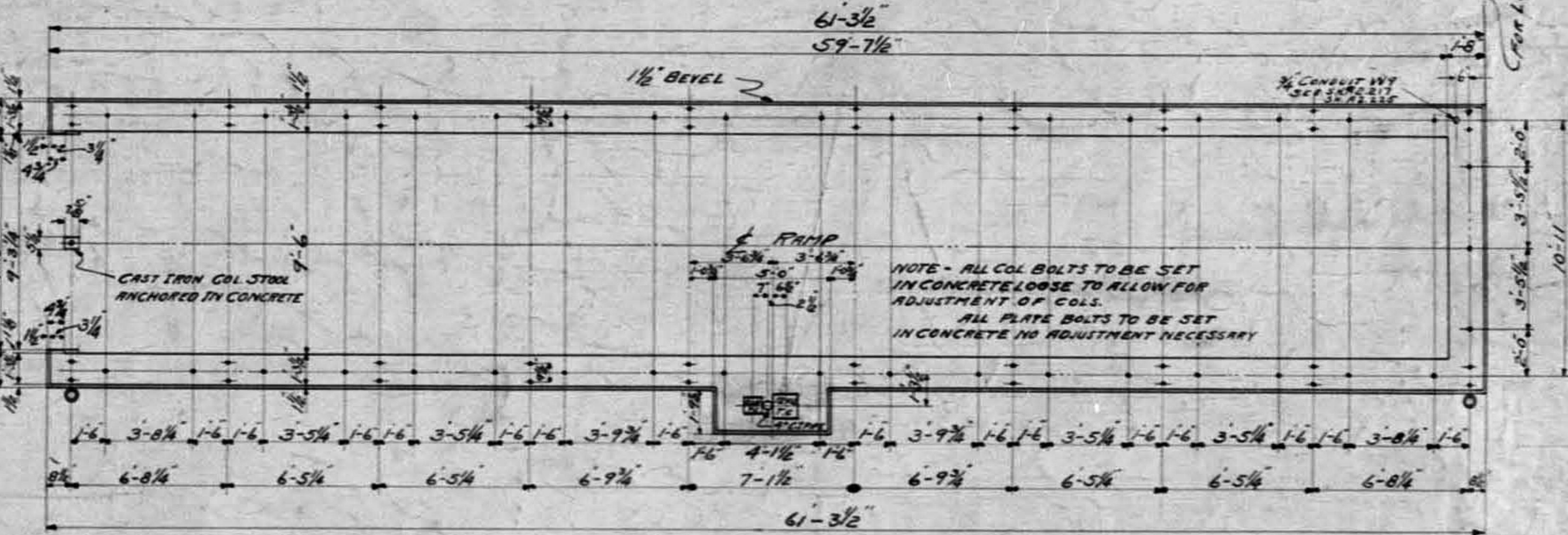
TYPICAL WEST END ELEVATION - A



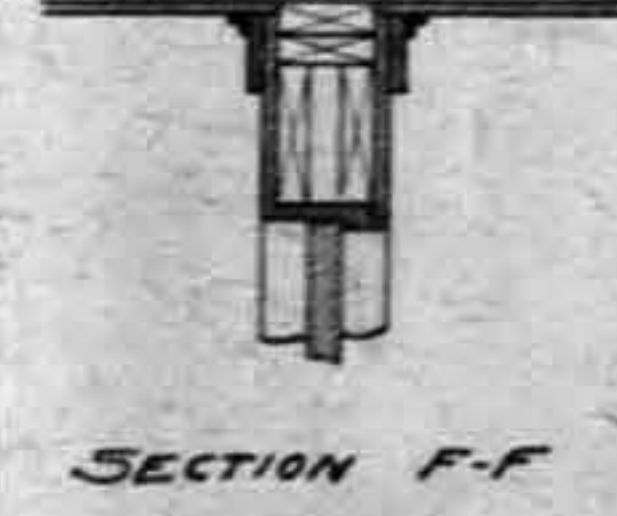
ROOF PLAN - A
61'-3 1/2"



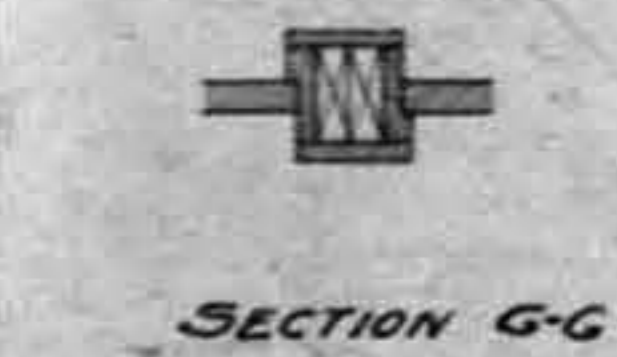
FLOOR PLAN - A



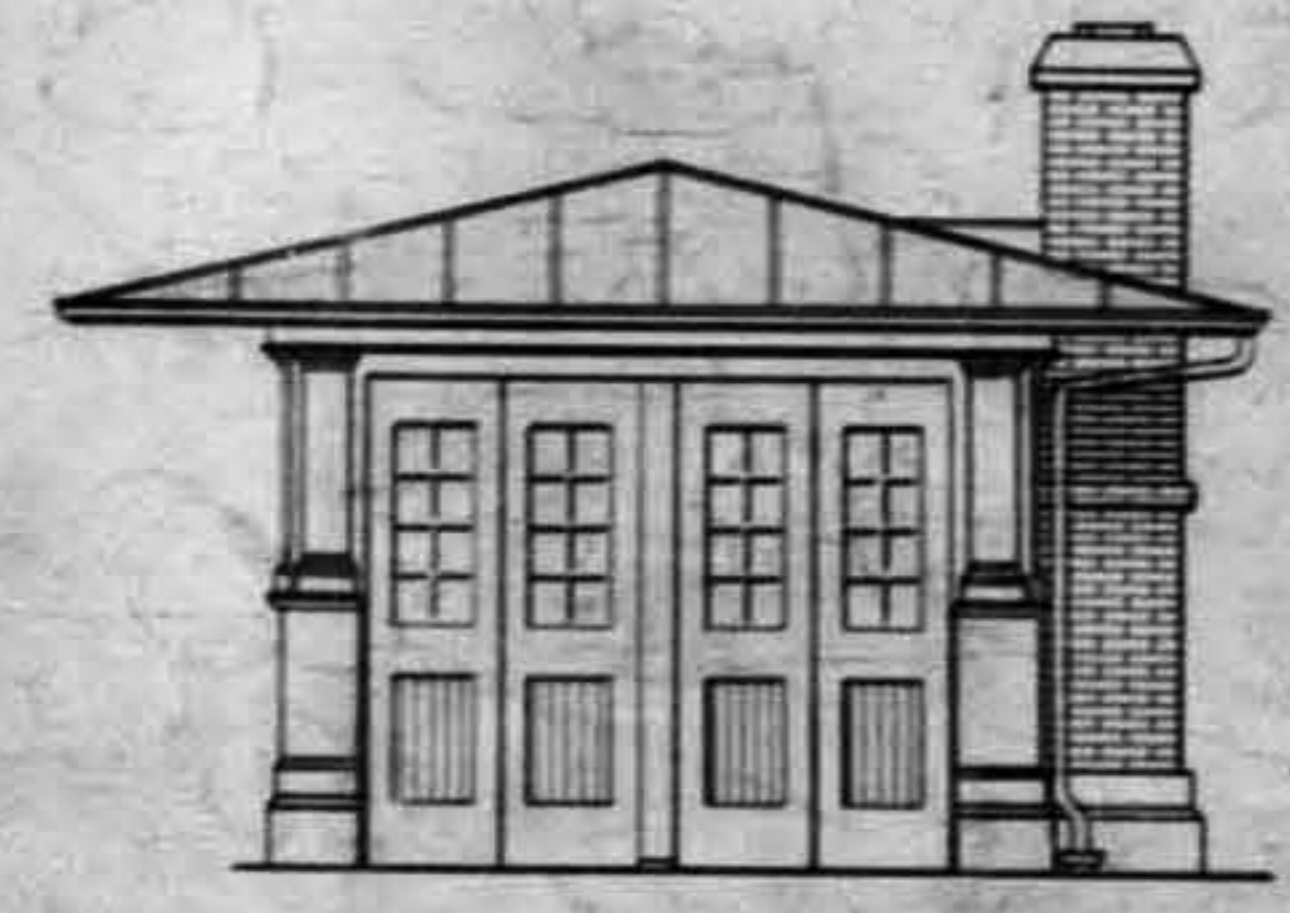
FOUNDATION PLAN - A



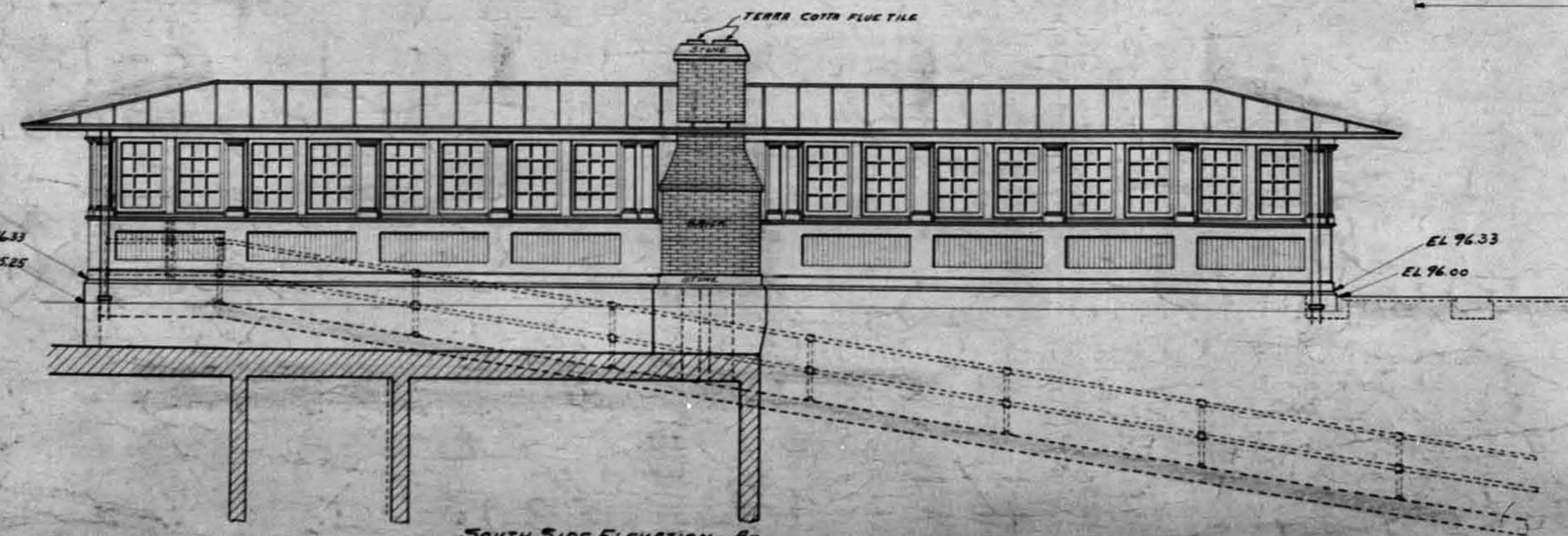
SECTION F-F



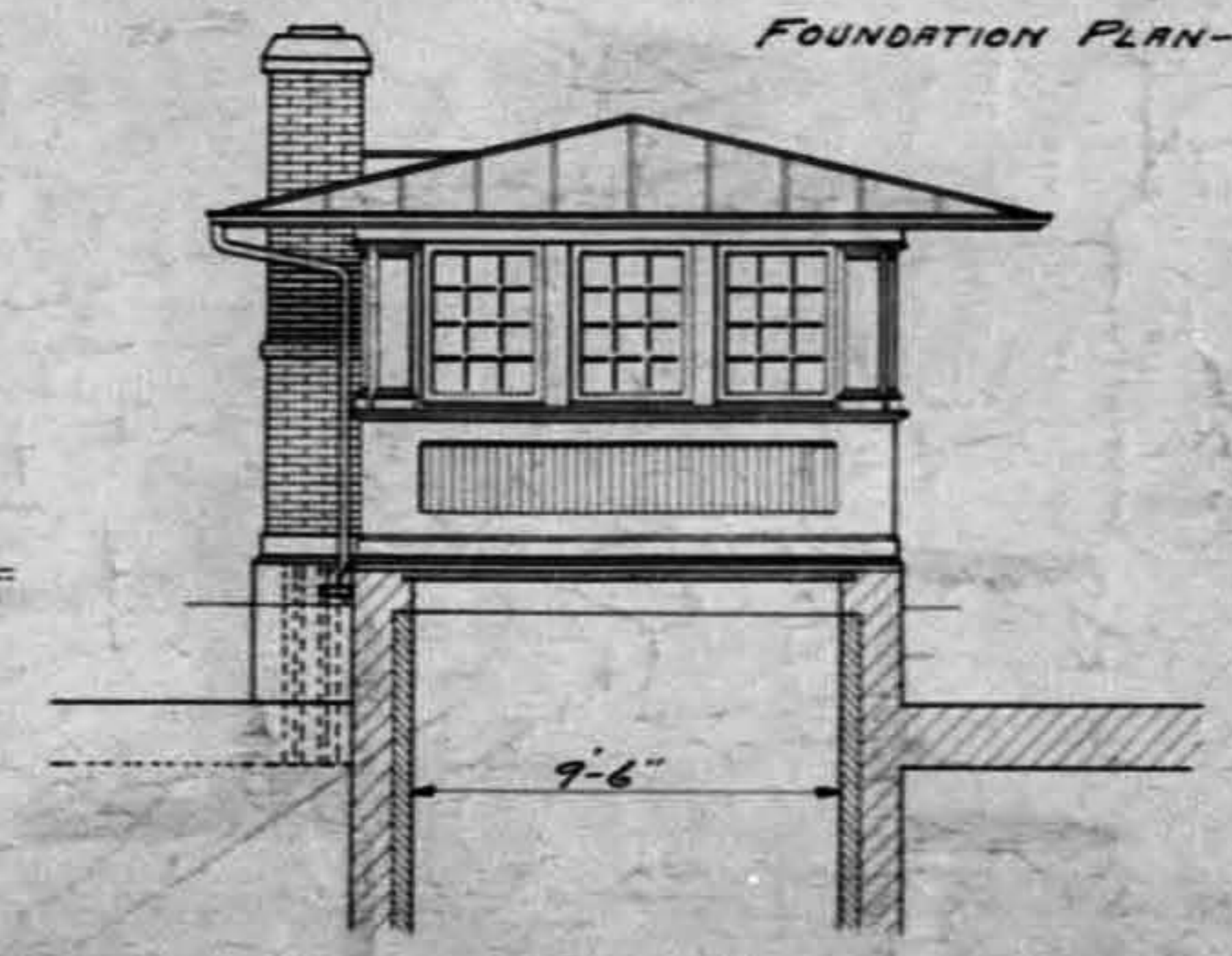
SECTION G-G



WEST END ELEVATION - A



SOUTH SIDE ELEVATION - A



EAST END ELEVATION - A

6' COLS. - 20 REB. - A
 10 REB. - B
 15 REB. - C

NOTE - ALL COL. BOLTS TO BE SET IN CONCRETE LOOSE TO ALLOW FOR ADJUSTMENT OF COLS.
 ALL PLATE BOLTS TO BE SET IN CONCRETE NO ADJUSTMENT NECESSARY

Approved *W. H. J. J. J.*

Plan Approved February 12, 1918
Frank H. ...
Geo. ...
John ...

COUNTY OF CUYAHOGA
 DETROIT - SUPERIOR BRIDGE

CLEVELAND OHIO
 GENERAL ARRANGEMENT & DETAILS OF SHELTER HOUSE
 OVER RAMP AT WEST & DETROIT AVE.
 DATE 1-20-17
 REVISED 5-25-17
 SCALE 1/4" = 1'-0"