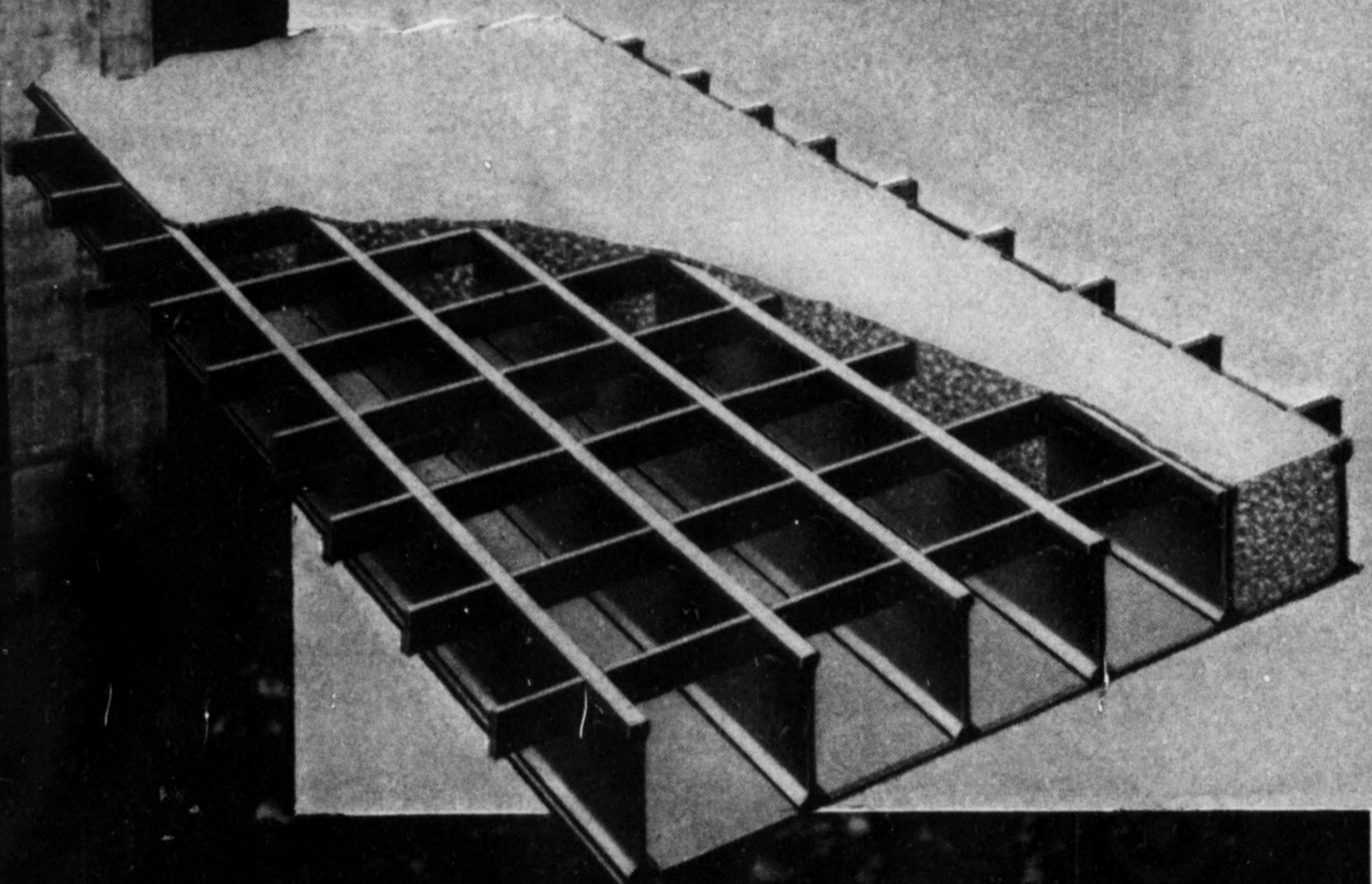


U·S·S I-Beam-Lok Steel Flooring



32,420 SQUARE FEET of U·S·S I-Beam-Lok Steel Flooring were used on the Wautauga River Bridge constructed for the Tennessee Valley Authority. Contractor and fabricator was the Nashville Bridge Company, Nashville, Tenn.



reduced floor weight 42%

ON WAUTAUGA RIVER BRIDGE

BY using U·S·S I-Beam-Lok Steel Flooring on this bridge over the Wautauga River, the Tennessee Valley Authority was able to cut the weight of the bridge floor nearly in half and realize substantial savings in structural members. In addition, the speedy construction resulting from the use of this flooring enabled TVA to open the highway to the dam site sooner.

TVA specified 3" concrete-filled U·S·S I-Beam-Lok with 1/4" concrete overfill for the job, and the approximate weight of the 32,420 square feet required was 1,601,540 pounds. Had 7" concrete been used the floor weight would have been about 2,755,700 pounds. Use of U·S·S I-Beam-Lok thus saved 1,154,160 pounds, or about 42% of the

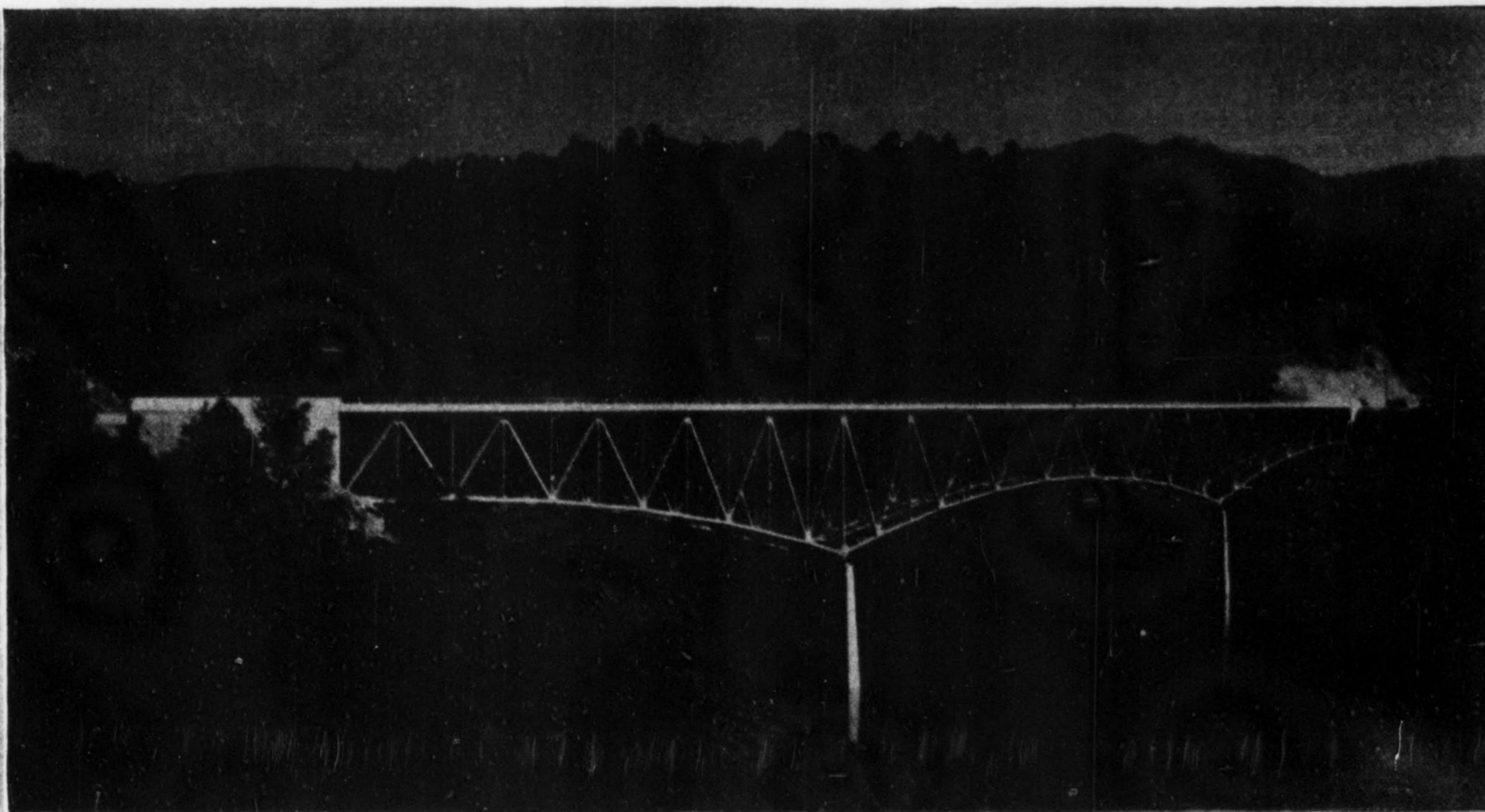
weight of the floor with 7" concrete construction.

Concrete-filled type U·S·S I-Beam-Lok Steel Flooring provides a smooth-riding, safe, fireproof and long-life surface.

By reducing the weight on the supporting structure, this type of flooring permits use of smaller stringers, floor beams, trusses and piers. U·S·S I-Beam-Lok is delivered completely shop fabricated and no concrete forms are necessary.

In addition to the concrete-filled type, U·S·S I-Beam-Lok Steel Flooring is available in open-type weighing as little as 18.8 lbs./sq. ft.

Get full information on these "modern floors for modern traffic." Our engineers will be glad to discuss their possibilities with you.



UNITED STATES STEEL COMPANY, PITTSBURGH
COLUMBIA-GENEVA STEEL DIVISION, SAN FRANCISCO • TENNESSEE COAL & IRON DIVISION, FAIRFIELD, ALA.
UNITED STATES STEEL EXPORT COMPANY, NEW YORK

U·S·S I-BEAM-LOK



2-1445

UNITED STATES STEEL